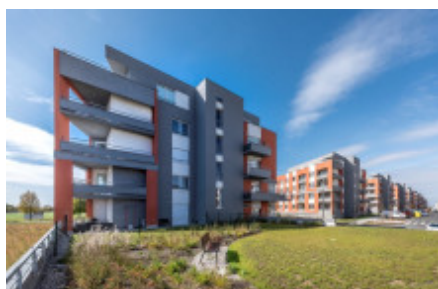
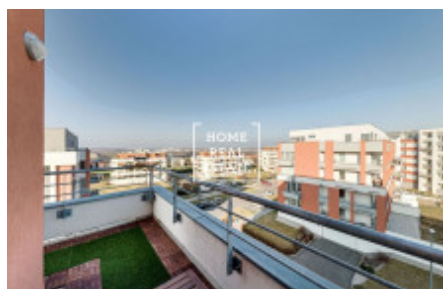
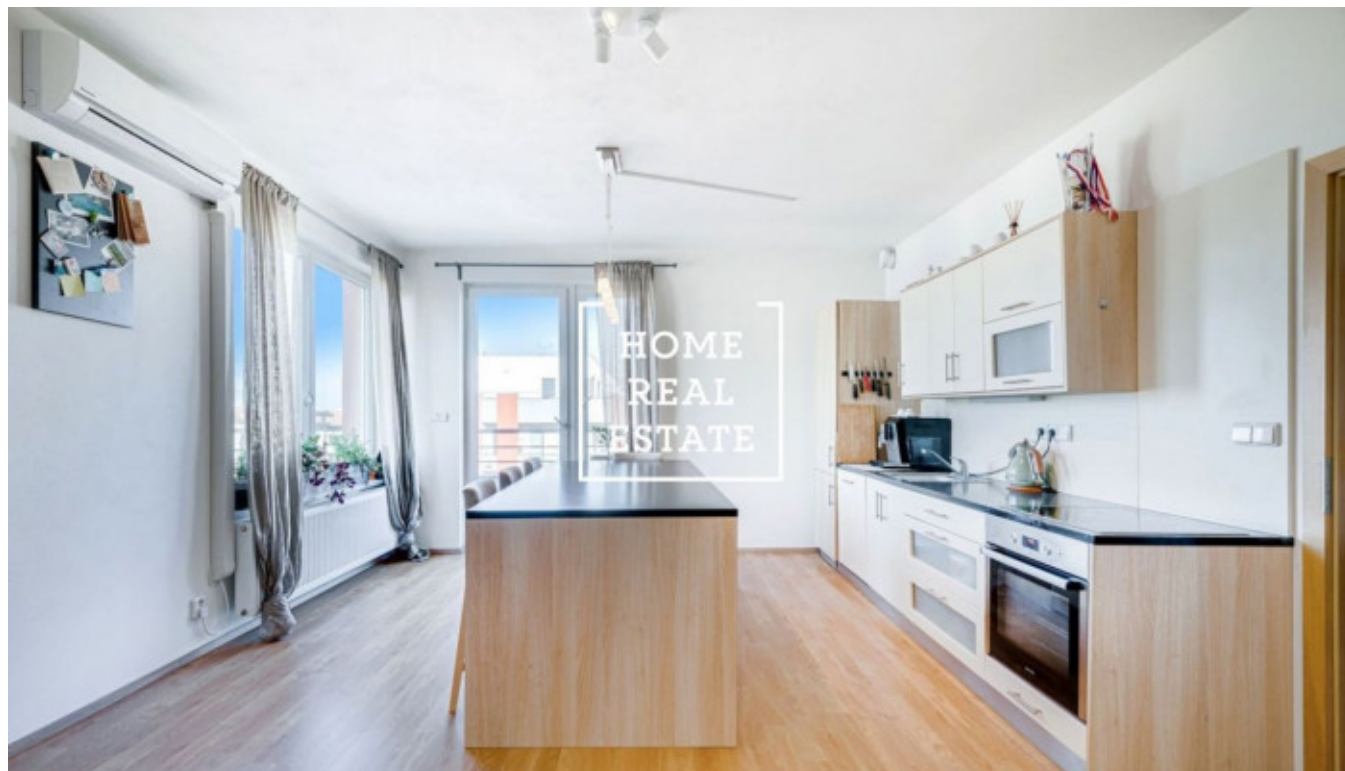


HOME
REAL
ESTATE

Sale flat 2+kk, 61 m² - Sazovická, Zličín



Home Real Estate exclusively offers for rent a 1-bedroom apartment (2+kt) of 62 sqm + loggia of 6 sqm, located on the 6th floor of the Metropole Zličín project in Prague 5 - Stodůlky.

The interior consists of a fully furnished living room with kitchenette, loggia, separate bedroom with a double bed and large closet, pantry (2 sqm), toilet, bathroom, and entrance hall. The loggia offers a comfortable atmosphere for reading, watching movies, playing with your kids, or having lunch into the fresh air.

The building was completed in 2019. It is part of the Metropole Zličín project, which is still under construction since 2007, near the Zličín metro station. All previous phases of this project were sold out before the construction was completed. It represents not only an excellent housing choice, but also a safe investment. The whole project offers new quality technologies, such as door access control system, garage door openers, and security camera system. On the ground floor, there's a bike room.

In the vicinity, you will find restaurants, a shopping center with hypermarket and cinema, IKEA store, bus stops, and Zličín metro station.

Available from 1.5.2021.

Price: 18.000 CZK + utilities: 3.766 CZK + electricity supply will be transferred to the lessee.

The price includes a parking space and cellar of 3 sqm.

For more information about this property or to arrange the viewings, just fill in the form below, and we will contact you as soon as possible to arrange a date of viewing.

ID	36329	Offer	Sale
Group	2+kk	Furnished	Furnished
Location	Sazovická	Ownership	Personal
Usable area	61 m ²	Floor	4 - Floor
City	Prague	District	Zličín
City district	Zličín	Status	Realized