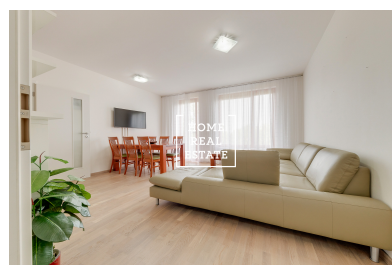
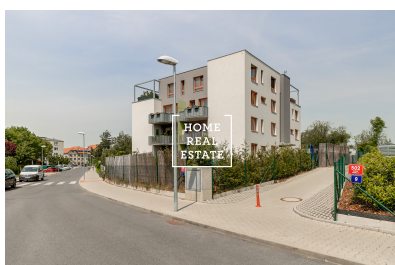
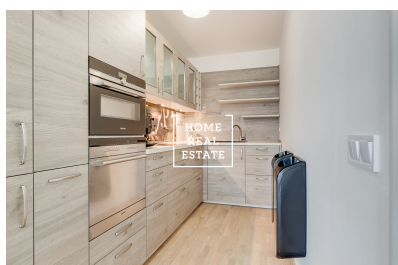
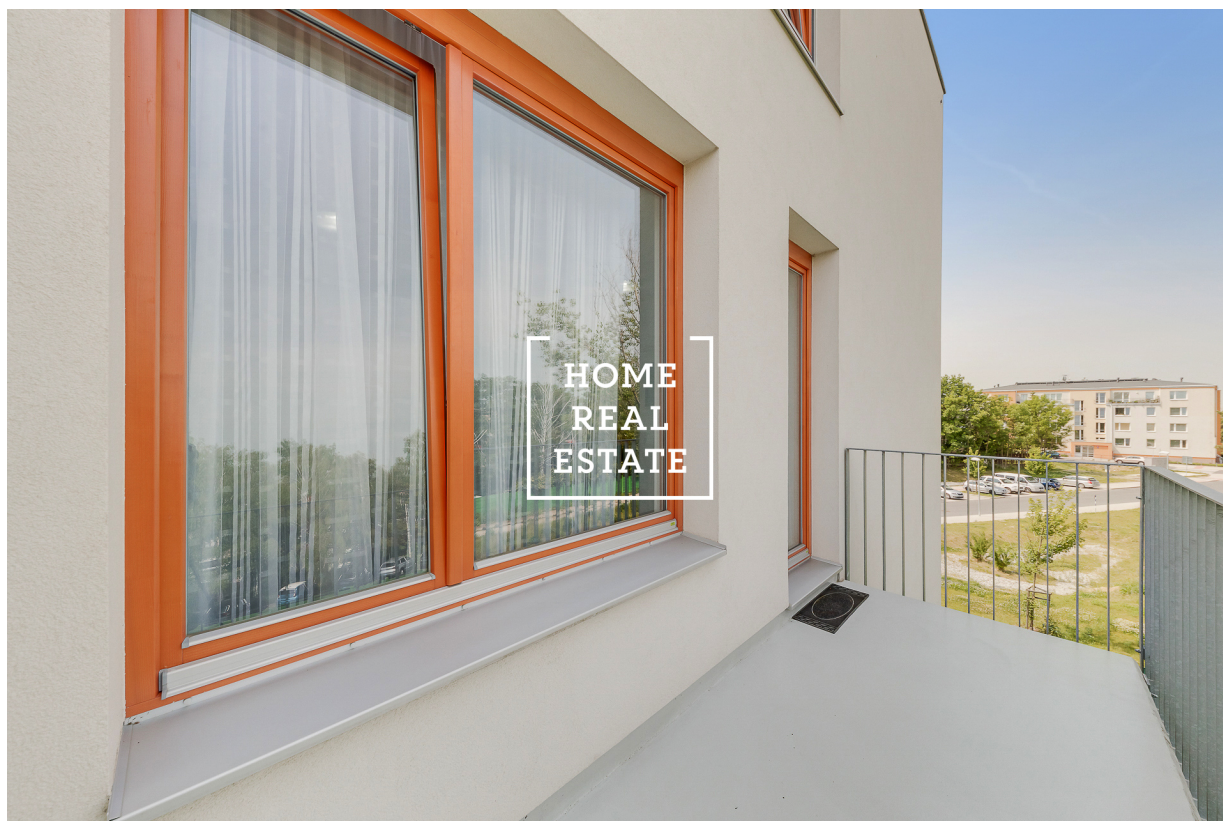


HOME
REAL
ESTATE

Sale flat 3+kk, 70.8 m2 - Křivatcová



**HOME
REAL
ESTATE**

Home Real Estate in the exclusive representation of the owner offers for sale two-bedroom flat (3+kt) with a balcony and views of greenery. It is situated on the 3rd floor of an four-floor apartment building. It is a part of KOIVU Zličín project built by a finnish company YIT. It was finished in january of 2018.

The building is located in the Křivatcová street in Zličín, only 3 minutes bus ride from Zličín metro station where you can also find a lot of shops and services. KOIVU is a small residential project that consists of few low-rise buildings surrounded by older buildings and greenery. There are even two small lakes nearby, lots of bike paths and places to Relax in the nature. There is a park between the apartment buildings with a sitting area and a childrens playground. Windows of the flat face the surrounding greenery.

The apartment has a total area of 70,8 sq m and a lot of natural light. It consists of an entry hall (4,5 sq m) that leads to a separate toilet (1,8 sq m), storage room with a washing mashine (1,3 sq m) and living room (29 m²). Living room is connected with the kitchen, is oriented to the north and leads to a private part of the flat. That consists of a small hall (2,6 sq m), bathroom (4,2 sq m) and two bedrooms (12,4 and 10,3 sq m) oriented to the west.

The equipment and materials used in the flat have a high quality. Kitchen by german luxury kitchen company Nolte Küchen is equiped with a ceramic sink, Siemens appliences including separate fridge and freezer. Working spaces in kitchen are higher than usual for more comfort while cooking. There is a safety camera system in the building.

There is also one parking and a cellar (2,4 sq m) on the underground floor that belongs to this apartment.

Final price of the flat is 9.900.000,- Kč including all fees.

For more information and viewings contact our agent or fill the form below.



ID
Offer
Group
Furnished
Location
Ownership
Usable area
City
City district

[35656](#)
Sale
3+kk
Partially furnished
Křivatcová 502/7
Personal
70.8 m²
[Prague](#)
[Zličín](#)