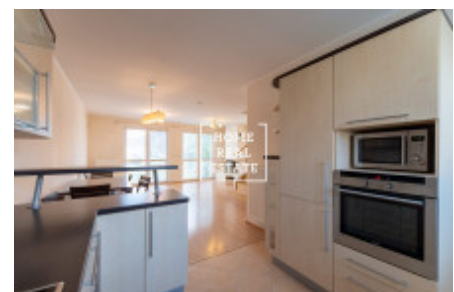
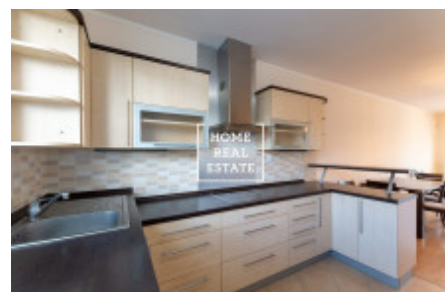


HOME
REAL
ESTATE

Sale house family, 144 m2 - Smržová



«Home Real Estate» offers to buy a part of a detached family house (4 bedrooms) with a total area of 144 sqm and land (435 sqm), located in a very desirable and quiet location Prague 10 - Pitkovice . Partially furnished two-storey house in Pitkovice is ideal for a large family. There is a spacious living room with kitchen, utility room with boiler and bathroom on the ground floor . Upstairs there are 4 spacious bedrooms and another bathroom. The rooms have access to the balcony and terrace. The house was approved in 2007, the developer is Central Group. There is the newest kindergarten with a capacity of 112 children in the neighborhood. Pitkovice is a district on the south-eastern outskirts of Prague near the Botič-Milíčov nature park and Průhonice castle park, which is one of the most important castle parks in the Czech Republic. The park and its plant collections were included in the UNESCO World Heritage List in 2012. In the neighboring Čestlice you will find several large multinational retail chains (Makro, Kika, Albert, Bauhaus), the Spektrum shopping center and car showrooms. Since 2008 there is the largest aquapark in Central Europe, Aquapalace Praha in the area. 17 minutes by car to Wenceslas Square (17 km) 3 minutes walk to the bus stops (lines no. 213 and 906) 10 minutes by bus to the metro station C - Haje. 3 minutes by car to Uhřetěves, Pruhonice Total price: 13.598.000 CZK including the REA commission The house layout, important links with information about the location and information about fees will be sent to your email address. Are you interested in a viewing? Just fill in the form below, and we will contact you as soon as possible to arrange a date of viewing of a house that will suit you.

ID	35556	Offer	Sale
Group	Family	Furnished	Furnished
Ownership	Personal	Usable area	144 m ²
Parking	Yes	City	Prague
City district	Pitkovice	Status	Realized