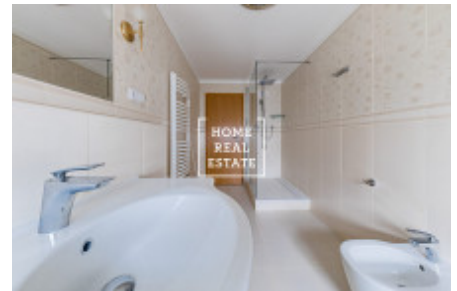
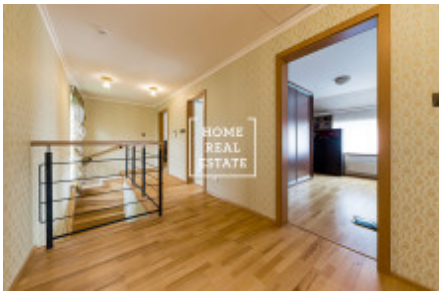


HOME
REAL
ESTATE

Sale house family, 259 m² - Na Zeleném Vršku



Home Real Estate offers to buy a stunning family house (259 sqm) with land (1353 sqm), situated in a new residential area of Velké Popovice near Prague. The project was designed by the Swiss Architectural Office and subsequently implemented by Proctus in 2010-2012. The project brings a very quiet private living in 19 family houses in the immediate vicinity of the forest and nature reserve Velkopopovicko and at the same time close to the city. Water connected to the project from the springs is also used in the production of legendary Velkopopovický Kozel beer. Separate two-storey 4-bedroom house is located at the end of a street Na Zeleným Vršku. Disposition : The ground floor features a living room with dining room and fireplace, kitchen and access to the terrace. There is also an entrance hall, dressing room, pantry and toilet. The first floor includes a master bedroom with en-suite bathroom, another 3 rooms (2 with balcony access), gallery and bathroom. Large storage space in the attic of the house. The basement includes a double garage (you can also park in 2 outdoor parking places), utility room, bathroom and cellar. The house features high standard equipment: central vacuum cleaner, pre-window blinds on remote control on all windows, camera system, alarm, fire alarm. The floor heating is provided by Viessman heat pump. You will find all the necessary civic amenities in the center of the village (4 minutes by car): food stores, restaurants, post office, kindergarten and primary school, a general practitioner doctor and pharmacy. There are also plenty of sports facilities: tennis courts, ice rink, golf course. The picturesque landscape of the village offers many ponds, forests, nature park Velkopopovicko. Good transport accessibility to Prague: Chodov metro station can be reached in just 15 minutes by car. Trains and suburban buses from Stránčice also provide quick connections with the capital city. Total price: 10.200.000 CZK including real estate agency fee The price does not include the Italian furniture, but it can be purchased in the case of interest by agreement. The great advantage of this house is the possibility of converting the basement into living space and also creating a very nice room under the roof (which would extra 120 sqm to the full area). The house has everything a modern family needs for life, so we strongly recommend a viewing. To get more information about this property or to arrange a viewing, please contact us or fill in the form below, we will be glad to help you!

ID	35552	Offer	Sale
Group	Family	Furnished	Furnished
Ownership	Personal	Usable area	259 m ²
City	Prague	Status	Realized