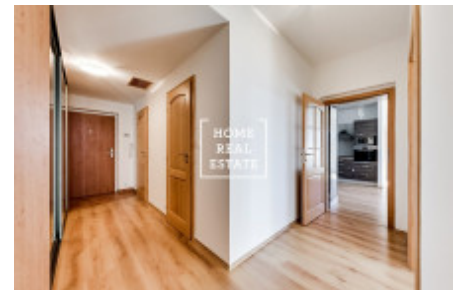
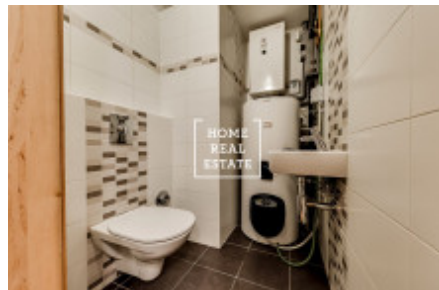
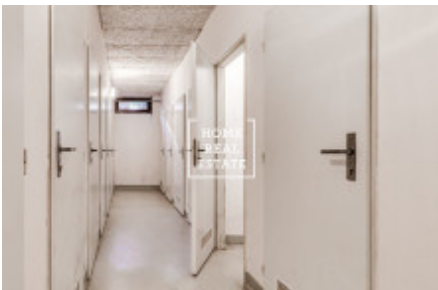


HOME
REAL
ESTATE

Rent flat 4+kk, 114 m2 - Na Návsi, Praha 10



Home Real Estate offers for rent a fully furnished 3-bedroom (4+kt) apartment with a total floor area of 114 sqm + 89 sqm terrace and 103 sqm front garden, situated on the raised ground floor of a Dolní Měcholupy IV residential complex, Prague 10 - Dolní Měcholupy. The layout consists of a spacious living room with a fully equipped kitchen; 3 separate bedrooms (one of which has its own bathroom); a separate toilet; bathroom and hallway. The apartment is provided with underfloor heating & heat recovery systems and an electric boiler. Also, there are solar panels on the top of the house. As a nice bonus, there is a sauna with a swimming pool in the private garden. The Dolní Měcholupy IV residential complex, located on the gated guard, behind the municipal pond, was built using all modern technologies and implemented in a low-energy standard. The proposal aimed at the quality of the units, to respect the privacy and safety of their residents. All apartments have a balcony, terrace, or front garden. Nearby, you will find all civic amenities: shops, schools, playground, golf course, football field, Hostivař forest park, shopping center, restaurants and medical clinic services. Dolní Měcholupy bus stop is right next to the house. Horní Měcholupy railway station is just a 7-minute bus ride away. From here you can easily reach the city center in 20 minutes. Price: 40,000 CZK + utilities: 2,000 CZK + electricity charges: 2,500 CZK + internet: 500 CZK. For an additional fee, it is possible to install a burglar alarm system (approx. 700 CZK). The apartment comes with a 2 parking spaces and a cellar of 4 sqm in the underground garage. There is also a bike and cycle storage room. For more information about this property or to arrange the viewings, just fill in the form below, and we will contact you as soon as possible to arrange a date of viewing.

ID	35514	Offer	Rental
Group	4+kk	Furnished	Furnished
Ownership	Personal	Usable area	114 m ²
City	Prague	District	Praha 10
City district	Dolní Měcholupy	Status	Realized