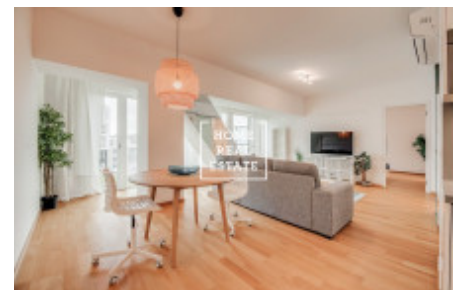
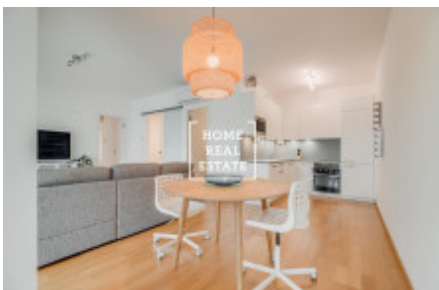


HOME
REAL
ESTATE

Rent flat 2+kk, 80 m2 - Holečkova, Praha 5



Home Real Estate offers for rent an apartment with a layout of 2+kk and with the full area of 80 sqm, situated in the Sacre Coeur 2 Residence in Prague 5 - Smichov. The fully furnished, spacious apartment with an air conditioning system is located on the 3rd floor of a new residential project. The layout consists of a: - living room with a fully equipped kitchenette, dining table, sofa, armchairs and TV; - bedroom with a double bed and wardrobe; - bathroom with a bathtub and toilet; - hallway and storage room

The Sacre Coeur 2 project is the only finalist from Czech Republic of an International Real Estate MIPIM AWARDS 2017 in the category Best Residential Development. It represents an enclosed area with a six-storey residential building in form of horseshoe. On the ground floor there is a 24-hour reception with a wide range of services. The premises and surroundings of the residence are monitored by a camera system. The district boasts a developed infrastructure. In the immediate vicinity there are kindergartens, schools, supermarkets, Kinsky Garden park with a playground and observation deck, the New Smichov shopping mall and a wide choice of restaurants and cafes. Nearby is located the prestigious international lyceum Lycée Français de Prague. Holečkova and Kobrova bus stops are within walking distance, Bertramka tram stop is located 350 meters away, Anděl metro station is just 8 minutes' tram ride away. In half an hour you can get to the most iconic sights of Prague. Available to move in immediately. Price: 22,000 CZK + utilities: 5500 CZK + electricity The security deposit is equal to one month's rent with utilities. The parking place in the underground garage is available for 2500 CZK/month For more information about this property or to arrange the viewings, just fill in the form below, and we will contact you as soon as possible to arrange a date of viewing.

ID	35476	Offer	Rental
Group	2+kk	Furnished	Furnished
Ownership	Personal	Usable area	80 m ²
City	Prague	District	Praha 5
City district	Košíře	Status	Realized