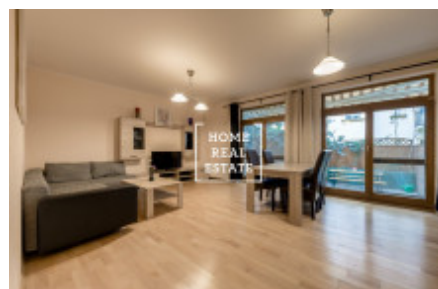
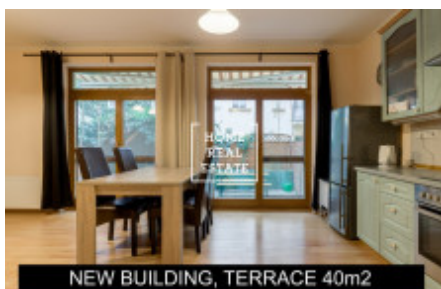


HOME
REAL
ESTATE

Sale flat 3+kk, 79 m² - Lublaňská, Praha 2



Home Real Estate offers for sale an apartment 3+kk with the full area of 79 sq.m. (+ terrace of 40 sq.m.), located in a new building from 2004 in Prague 2 - Vinohrady. Spacious, fully furnished apartment is situated on the 1st floor of an apartment building with central heating and consists of a large living room with a fully equipped wooden kitchen, dining area, TV storage combination, sofa and an entrance to the own terrace, corridor, 2 spacious bedrooms with double beds, bathroom with washing machine, separate toilet with bidet, pantry and hallway. The windows are equipped with external blinds. The house boasts a prestigious location. In the surroundings you will find excellent civic amenities: supermarkets, banks, shops, pharmacies, post office, health facilities, shopping centers Atrium Flora and Arkady Pankrac, kindergarten, elementary school, and fitness club. You will find a wide choice of excellent cafes and restaurants in the vicinity. Also, there is a large number of parks near. For example, for outdoor recreation, you can use the local park Havlickovy sady (Grebovka). The park is famous for its historical significance. Here you can enjoy real czech wine from the wine cellar or spend a wonderful sunny day on the playground with your children. Excellent transport accessibility - Zvonařka and Bruselská tram stops are within walking distance, Vyšehrad metro station is around 15 minutes' walk away. The center of Prague is a 5-minute drive away. Total price: 11.000.000 CZK, incl. real estate agency commission. For more information about this property or to arrange the viewings, just fill in the form below, and we will contact you as soon as possible to arrange a date of viewing. Viewings are also possible on weekends. We will be glad to help you!

ID	35358	Offer	Sale
Group	3+kk	Furnished	Furnished
Ownership	Personal	Usable area	79 m ²
City	Prague	District	Praha 2
City district	Nové Město	Status	Realized