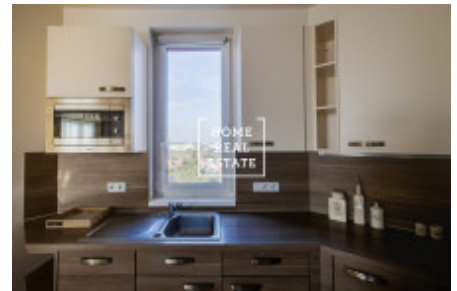
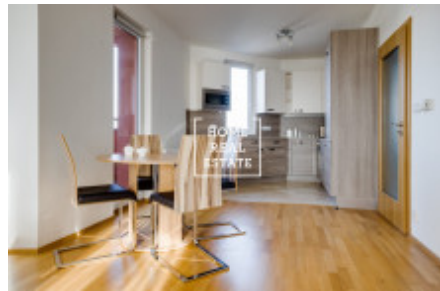
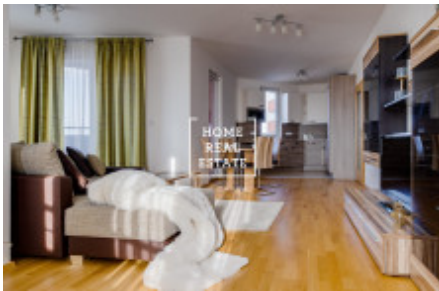
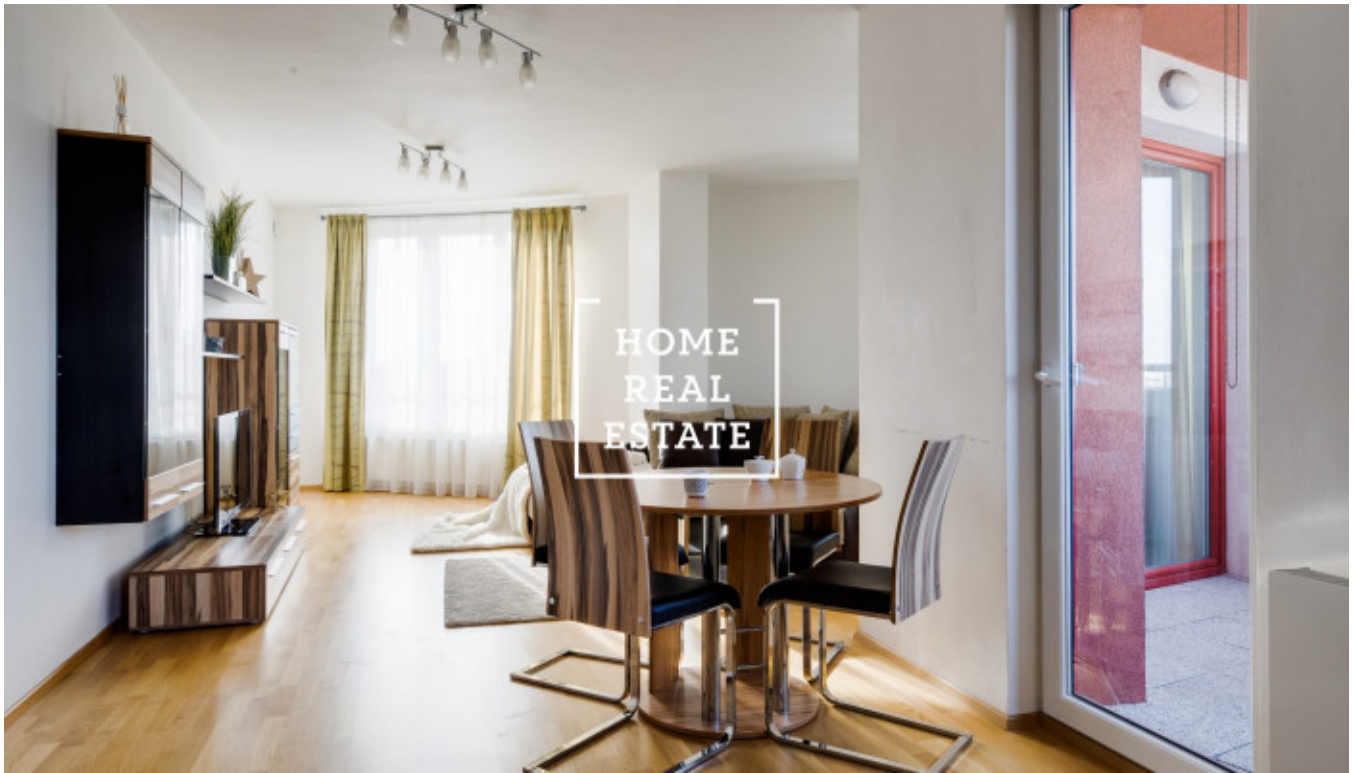


HOME  
REAL  
ESTATE

# Rent flat 3+kk, 88 m2 - Tlumačovská , Praha 5



«Home Real Estate» offers to rent a 3+kk flat with the full area of 93 m<sup>2</sup>, situated in the Residence "Prague Towers" in a frequented and actively developing part of Prague 5 - Stodůlky. This fully furnished stylish flat is situated on the 3rd floor of a new building. The layout of the flat includes living with kitchen unit, bedroom, bathroom, separate toilet and an entrance hall. Living room includes relaxation zone with couch and TV and dinner zone with dinner table and kitchen unit equipped with all necessary electronic devices (ceramic stove, ensuite oven, fridge, extractor hood, washing machine, electric kettle and microwave oven). Both bedrooms are equipped with double bed, TV and wardrobe. Bathroom is equipped with bath, sink and washing machine. There is also a utility room. Only high quality floors and tiles are used all over the flat. Prague Towers is a unique residential project with the view of the whole city. Both buildings features almost 300 flats altogether and currently rank among 30 highest building in Prague. You will find all public amenities nearby: supermarket Lidl just near the house, shopping mall Lužiny, the Lužiny brewery, post office, pharmacy, restaurants and many other services. There is plenty of elementary and high schools and medical facilities in the neighbourhood. Nature lovers can enjoy picturesque walks in the nearby "Centrální" park with Stodůlecký pond and a sightseeing place. Excellent transport accessibility: bus stops Baštického is situated just near the house. The nearest metro station Lužiny is about 600 m away. It takes about 20 minutes to get to the city center. Price: 22.000 CZK + 4.700 CZK utilities + 1.000 CZK electricity Parking and cellar are included in this price For more information about this property or to arrange the viewings, just fill in the form below, and we will contact you as soon as possible to arrange a date of viewing.

ID	<a href="#">35355</a>	Offer	Rental
Group	3+kk	Furnished	Furnished
Location	Tlumačovská 2766/26, Prague 13, Чехия	Ownership	Personal
Usable area	88 m <sup>2</sup>	Parking	Yes
City	<a href="#">Prague</a>	District	<a href="#">Praha 5</a>
City district	<a href="#">Stodůlky</a>	Status	Realized