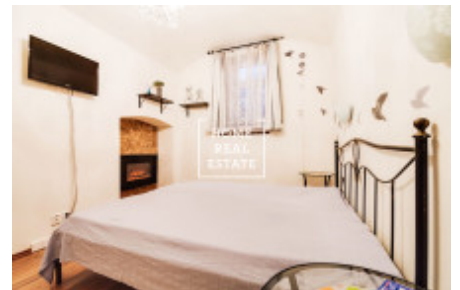
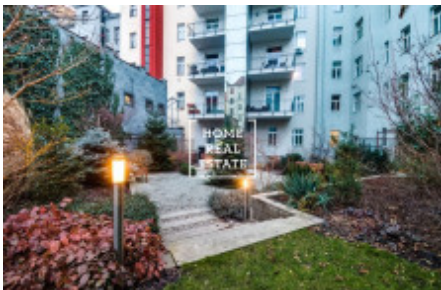


HOME  
REAL  
ESTATE

## Sale flat 4+1, 98 m<sup>2</sup> - Tyršova



Home Real Estate in the exclusive representation of the owner offers for sale an accommodation establishment with the full area of 98 sqm, situated right in the heart of the city, in Prague 2 - Nové Město. The layout consists of the two apartments. The apartment 1+1 includes a separate kitchen with all necessary appliances, bathroom with a shower and toilet, large hallway and a bedroom with a view of enclosed courtyard. The floor has an electric heating system using a solar power for reduction of electricity costs. The apartment 2+kk includes a large hallway with wardrobe and access to a large living room with separate toilet, fully equipped kitchen and pantry. Another part contains the second kitchen with access to a fully equipped bedroom with a separate toilet and shower. The house is located in the historic city center of Prague, in the popular location, near the I.P. Pavlov Square. In the surroundings you will find: Tesco Express supermarket, Folimanka park, banks, shops and a wide choice of quality restaurants and cafes. The last renovation was done in 2018 and there was created: 3 kitchen units, 3 bathrooms with a toilet and shower and 3 separately usable rooms There is also a mini park in a shared courtyard for friendly meetings. Excellent transport accessibility - I.P. Pavlova tram stop and metro station (line C) is without walking distance, Muzeum metro station (lines A and C) is also nearby. Total price: 6.000.000 CZK + real estate agency commission. For more information about this property or to arrange the viewings, just fill in the form below, and we will contact you as soon as possible to arrange a date of viewing. Viewings are also possible on weekends. We will be glad to help you!

ID	<a href="#">35207</a>	Offer	Sale
Group	4+1	Furnished	Furnished
Ownership	Personal	Usable area	98 m <sup>2</sup>
City	<a href="#">Prague</a>	City district	<a href="#">Nové Město</a>
Status	Realized		