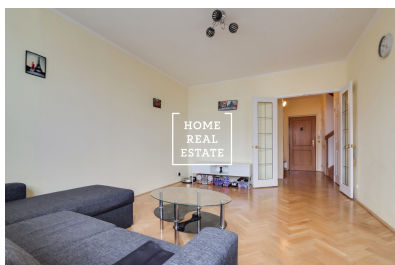
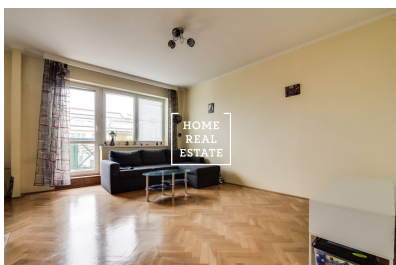


HOME  
REAL  
ESTATE

## Sale flat 3+1, 95 m2 - Společná, Praha 8



**HOME  
REAL  
ESTATE**

Home Real Estate in exclusive representation of the owner offers for sale 2-storey apartment 3 +1 with an area of 95 m<sup>2</sup> with a balcony of 4 m<sup>2</sup> within the apartment complex on Shared street in Prague 8. Mansard 3 + kk is located on 4 and 5 NP and has 2 toilets, 3 cellars - each 3 m<sup>2</sup>. The unit is situated in the courtyard with a view of the well-kept garden and at the same time thanks to its high location in the house, it has a nice view of Prague. The layout of the apartment consists of:

- entrance hall with entrance to the toilet and a small dressing room (under the stairs)
- a spacious living room with access to the west-facing balcony - a separate kitchen with a partition separating the dining area from the cooking area - nice wooden stairs lead to the upper part of the apartment, which consists of a large utility room, 2 bedrooms of equal size and bath with toilet. The apartment is sold with all furniture and appliances Elektrolux / Candy. The apartment complex on Společná Street is located in the immediate vicinity of Ladví metro station, but at the same time it is located in a quiet residential area of Prague 8, where there are all family houses and plenty of parking spaces. There is plenty of greenery around the complex.

The apartment has two floors, includes 2 bathrooms, 2 toilets, 2 chambers. The price also includes 3 cellars and all furniture. There is a private boiler and boiler.

At the same time you will find all amenities: supermarkets Kaufland, Albert and Lidl, restaurants and cafes, fitness center, medical facilities, kindergarten, elementary school Burešova with a large football field, public playground - Bedrichovska. Good transport sequence: Štěpničná tram stop is a few minutes walk from the place. The nearest metro station Ladví (line C) is a five minute walk. Very good access to both Letňany and the center (about 15 min) thanks to quick access to Liberecká street. Total price: 8.990.000 CZK + commission RK. Price includes 3 cellars and furniture. For more information and viewing please contact the broker or fill out the form below.



ID  
Offer  
Group  
Furnished  
Ownership  
Usable area  
City  
District  
City district

[35137](#)  
Sale  
3+1  
Furnished  
Personal  
95 m<sup>2</sup>  
[Prague](#)  
[Praha 8](#)  
[Libeň](#)