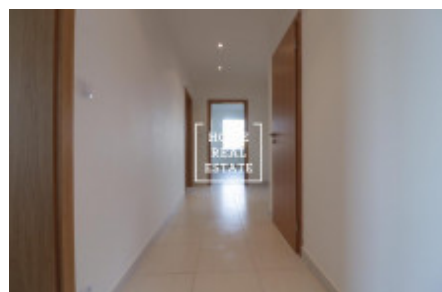
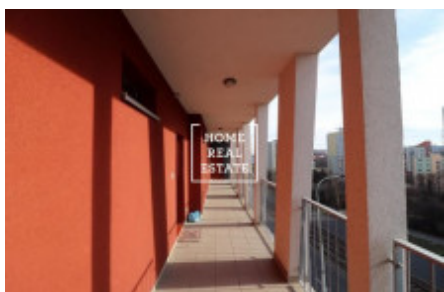


HOME  
REAL  
ESTATE

## Sale flat 3+kk, 82 m<sup>2</sup> - Švehlova, Praha 10



„Home Real Estate“ offers to buy a 2-bedroom flat with the full area of 82,7 m<sup>2</sup> (including balcony and basement (5,9 m<sup>2</sup> ), situated in Prague 10 - Záběhlice. Entirely new unfurnished flat is situated on the 2nd floor of a new building in Švehlova street and is oriented to the calm inner courtyard. There were no tenants in this flat. The layout of the apartment includes: -living room with kitchen unit - oriented to the south-west -2 bedroom - oriented to the west -large entrance hall with space for ensuite wardrobe -separated bathroom with bath and sink -separated toilet -glassed balcony with access to the living room and bedroom The price also includes: -spacious basement (6m<sup>2</sup>) - large parking place in the underground car park There are all public amenities nearby: supermarkets Penny, Albert and Lidl, restaurants, coffee shops, fitness, health facilities, kindergarten, shopping mall Hostivař with shops, services and cinema. Hostivař nature park nearby is a perfect place for walking and open air activities. Good transport accessibility: tram station Sídliště Zahradní Město is a few minutes walk away from the building. It takes 10 by tram to get to the nearest metro station Nádraží Hostivař (line A). Price 5.900.000 CZK + commission to the real estate agency To get more information about this property or to arrange a viewing, please contact us or fill in the form below, we will be glad to help you!

ID	<a href="#">35015</a>	Offer	Sale
Group	3+kk	Furnished	Partially furnished
Ownership	Personal	Usable area	82 m <sup>2</sup>
Parking	Yes	City	<a href="#">Prague</a>
District	<a href="#">Praha 10</a>	City district	<a href="#">Záběhlice</a>
Status	Realized		