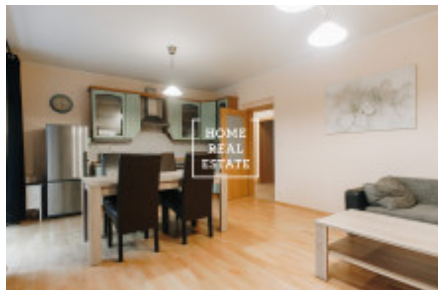
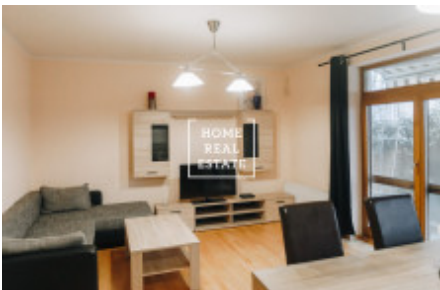


HOME
REAL
ESTATE

Rent flat 3+kk, 85 m2 - Lublaňská, Praha 2



A 3 + kk 85 sqm flat with a 37 sqm terrace located in a modern (2006) building in the beautiful Kralovske Vinohrady, Prague 2. The Vinohrady district consists of Namesti Miru, Vinohradska Trida, Reigeruv and Havlickuv Sady.

Nearby are two shopping centers; Palac Flora, and Vinohradsky Pavilion. The area is a bustling cultural hub with many cafes, restaurants, nice green parks and other civic amenities, plus only a 5-minute walk to the Muzeum metro station.

The apartment is located on the ground floor of the building and connected to a courtyard in the back.

It's rooms are also quite spacious:

-Living room + KK with entrance to the terrace: 27.60 m2

-Terrace in the courtyard: 37 m2

-Children's room: 12.57 m2

-Bedroom: 19,09m2

-Bathroom: 5.95 m2

-Social WC: 3.30 m2

-Bathtub: 0.99 m2

-Front: 9.18 m2

The apartment unit is fully equipped with kitchen appliances, central heating, heating ladder, 2 washbasins, and WC, and a bidet, bath, videophone, and a built-in closet.

The whole apartment also has high quality floors.

Price: 28.000,- CZK + 5.000,- poplatky (incl. electricity)

For more information or to arrange a viewing, don't hesitate to contact us.

ID	34715	Offer	Rental
Group	3+kk	Furnished	Furnished
Location	Lublaňská 6, Vinohrady, Česko	Ownership	Personal
Usable area	85 m ²	City	Prague
District	Praha 2	City district	Nové Město
Status	Realized		