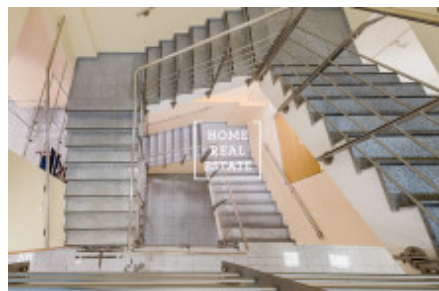
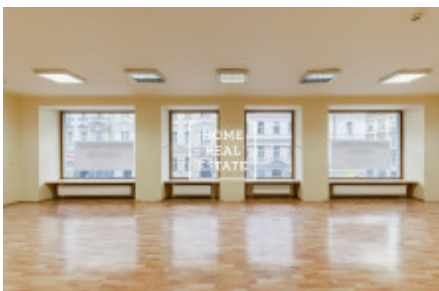




Rent commercial offices, 630 m2 - Milady Horákové, Praha 7



"Home Real Estate" offers em rent a commercial space with a total area of 630 sqm, located in the busy Milady Horakove Street in Prague 7 - Letna, near the Strossmayerovo namesti stop. We have a wide portfolio of off-market commercial property offers. For more offers of restaurants, cafes and hotels for rent and sale visit our website horeca.cz. The unfurnished commercial space is situated on three floors (basement, ground floor and 1st floor) and has 2 separate entrances from the main street (therefore the space can be divided into two!). There are large glass window displays on the ground and the first floor . There are sanitary facilities on each floor, the space also features a warehouse and a small terrace. The premises are suitable for gastro-operation, showroom, office or a combination of these (by dividing the space). Location: Milady Horakova Street is one of the most frequented streets in Prague 7. It connects the districts of Little Berlin and Letna. Almost every building in this street features a commercial space that brings very good earnings to the owners of cafes, restaurants, shops and other businesses associated with the city amenities. Given that public transport on this street is non-stop and the building is partly used as office, there is a possibility to have a non-stop operation. Business concepts are negotiable and the owner is not afraid of almost anything that could benefit for improving the location of Prague 7. Rent: 190.000 CZK + utilities Deposit: negotiable No compensation fee. You do not pay REA commission. Are you interested in a viewing? Just fill in the form below, and we will contact you as soon as possible to arrange a date of viewing of an apartment that will suit you. We have a wide portfolio of off-market commercial property offers. For more offers of restaurants, cafes and hotels for rent and sale visit our website horeca.cz.

ID	34494	Offer	Rental
Group	Offices	Furnished	unfurnished
Ownership	Personal	Usable area	630 m ²
City	Prague	District	Praha 7
City district	Bubeneč	Status	Realized