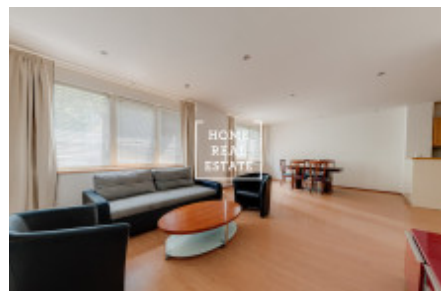
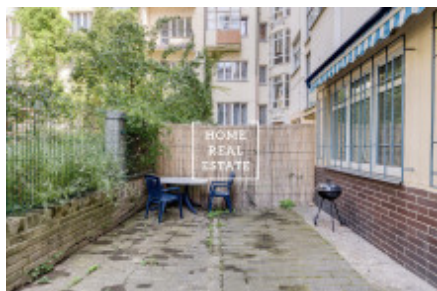
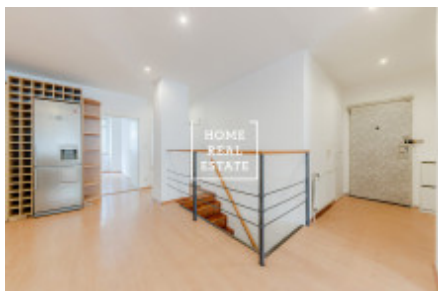
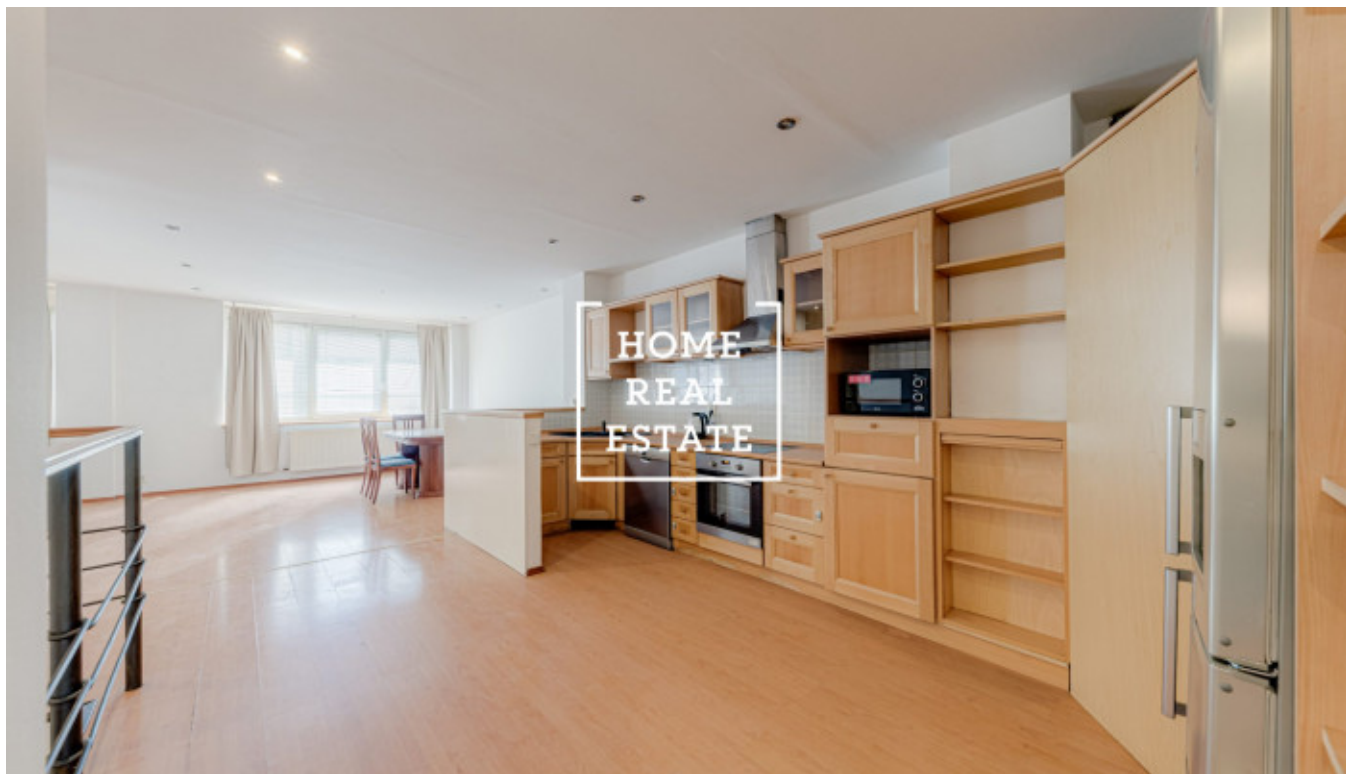




Rent commercial accommodation, 170 m2 - Eliášova, Praha 6



«Home Real Estate» offers for rent a two-story 4-bedroom apartment (170 sqm) with terrace (20 sqm), situated in an attractive part of Prague 6 - Dejvice. Fully furnished apartment is located on the 1st floor of a six-story reconstructed brick house. The apartment layout includes a spacious living room with fully equipped kitchen (fridge, stove, oven, hood, dishwasher, microwave), 2 bedrooms (one with a small balcony), bathroom with shower and toilet, and a separate toilet. Stairs from the living room lead to the ground floor, which features 2 bedrooms (one of them with access to the terrace), dressing room with built-in wardrobes, utility room and second bathroom with large bathtub and toilet. The larger terrace is oriented to the quiet courtyard. The building has central gas heating. The apartment can be used as a representative office space. You will find excellent civic amenities of the central part of quiet and clean Dejvice district nearby: supermarkets Albert and Tesco, really rich selection of renowned Prague restaurants, cafes and wine bars, park Stromovka and Prague Castle within walking distance. Transport accessibility: the apartment is located in the immediate vicinity of Vítězné náměstí with a tram stop and Dejvická metro station, Hradčanská metro station is approximately the same distance away, the journey to the city center will not take more than 10 minutes. Free to move in Total price: 48.000 CZK + 4.100 CZK for utilities + gas To get more information about this property or to arrange a viewing, please contact us or fill in the form below, we will be glad to help you!

ID	34485	Offer	Rental
Group	Accommodation	Furnished	unfurnished
Ownership	Personal	Usable area	170 m ²
City	Prague	District	Praha 6
City district	Bubeneč	Status	Realized