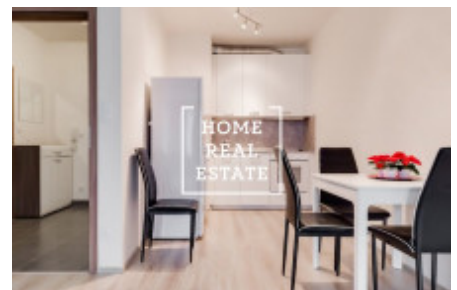
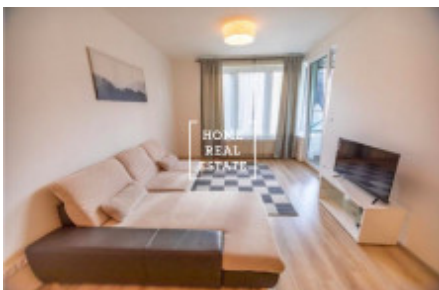


HOME
REAL
ESTATE

Rent flat 2+kk, 52 m2 - Vrchlického



A new, energy efficient, 55.5 sqm (2+kk) apartment in the Vrchlickeho residence. The Vrchlickeho residence is a new, energy efficient building from autumn of 2016. The building has entrances from Vrchlickeho street and Hlavackovy street. The suite is on the 4th floor and features a 3.12 sqm loggia with a view of the park and the neighbourhood.

The apartment is covered in floating laminate flooring with baseboards, large tiles, a fire door, and French windows with painted exterior. The main living area is connected to the kitchen, and down the corridor is the bathroom with toilet, and a bedroom.

The relatively small flat is organized in such a way that each person can have their own designated space when need be.

The Vrchlickeho residence is situated on the border of the Smichov and Kosire districts, which are filled with urban parks and greenery. Klamovka gardens is literally a few steps away from the building, and Petrin park and Husovy Sady are also nearby.

For more information or to set up a viewing, please don't hesitate to contact us.

ID	34269	Offer	Rental
Group	2+kk	Location	Vrchlického 18/7 Smíchov Praha
Ownership	Personal	Usable area	52 m ²
City	Prague	City district	Košíře
Status	Realized		