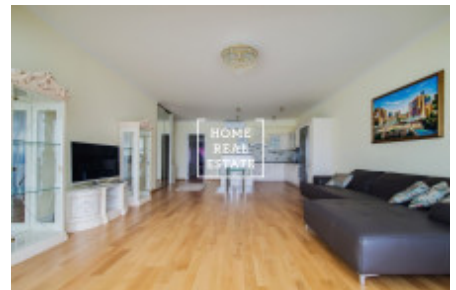
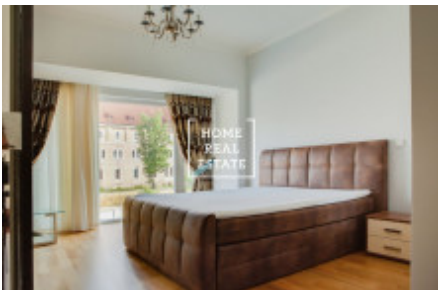


HOME  
REAL  
ESTATE

## Rent flat 4+kk, 144 m2 - Holečkova



The company «Home Real Estate» exclusively offers for rent a luxury flat 4 + kk of 144 m<sup>2</sup>, located in the design project Sacre Coeur in a quiet location Prague 5 - Smichov.

Completely furnished apartment is located on the 3rd floor of a residential project. The center of the apartment consists of a large room with a kitchen and a dining table. The apartment includes 3 bedrooms with large cupboards and double beds. Bathroom with bath and toilet with sink. A technical room with a washing machine. The complex of the residence is based on comfort and safety, the premises are provided by the reception and the camera system.

This location is very popular. Here you will find excellent civic amenities and a peaceful rest. Nearby there are Nový Smíchov Shopping Center and Multiple Village Cinemas. Big choice of quality restaurants and cafes. Within walking distance are green zones Mrázovka, Sacré Coeur Park and Petřínské sady for active rest and relaxation. It is a very popular place for those who want to live in the city center (5 minutes by metro to Wenceslas Square), use all the civic amenities, while living in a quiet place with the possibility of active rest.

Excellent transport accessibility - bus stop within walking distance, Andel metro station (only 7 minutes to the city center).

Nearby are parks and nature reserves for free time. All services within reach (kindergarten, elementary school, children's playground, post office, restaurant, cinema, OC).

Apartment equipment: comfortable furniture, built-in appliances, kitchen, bath, washing machine

Total price: 48.000 CZK + charges

Deposit is monthly rent.

The requesting client is charged with a commission of 1 monthly rent plus VAT.

For more information about this property or to arrange the viewings, please contact us or fill in the form below, we will be glad to help you!

ID	<a href="#">34235</a>	Offer	Rental
Group	4+kk	Furnished	Furnished
Location	Holečkova 3331, 150 00 Praha 5-Smíchov, Česko	Ownership	Personal
Usable area	144 m <sup>2</sup>	City	<a href="#">Prague</a>
City district	<a href="#">Košíře</a>	Status	Realized