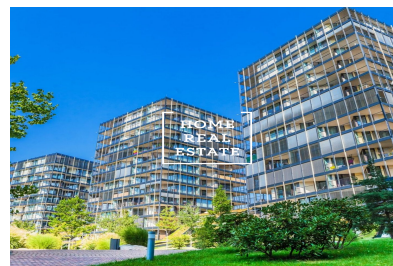
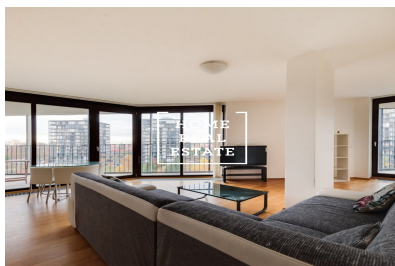
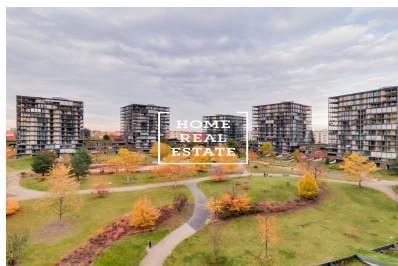
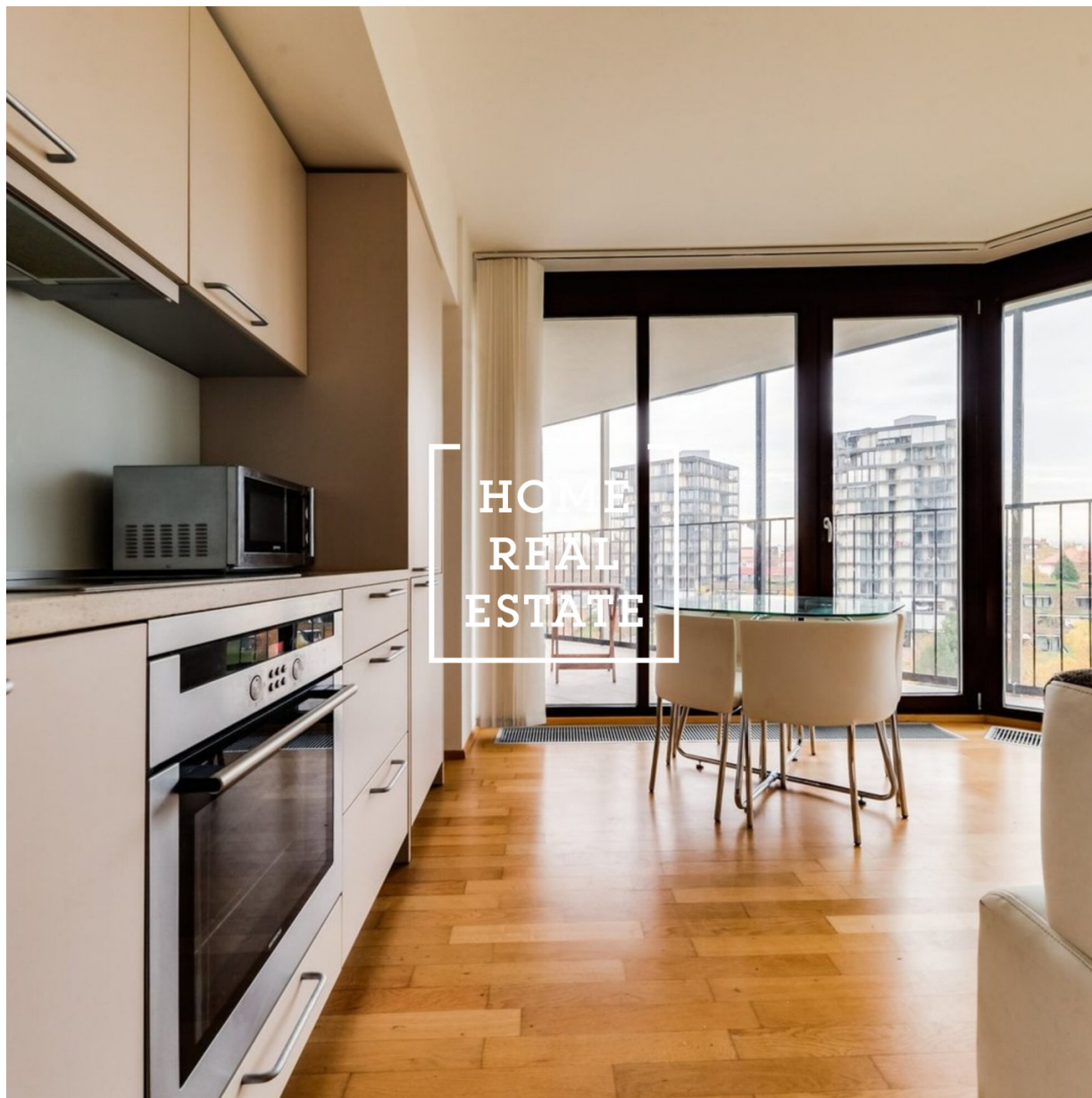


HOME
REAL
ESTATE

Sale flat 2+kk, 87 m2 - Pitterova



**HOME
REAL
ESTATE**



An 87 sqm (2 + kk) townhouse with a terrace in the great neighborhood of Zizkov, Prague 3. Completely furnished with stylish furniture, the suite is located on the ground floor of the newly-built Central Park Residence. The main living area is a sprawling 43.4 sqm living room connected to a modern kitchen, which is equipped with a glass ceramic stove, oven, fridge, garbator, microwave, and a small dining room. Inside the living room is a corner couch and a private entrance to the terrace only for other residences. The other part of the apartment consists of a 16.2 sqm bedroom with an entrance to a secluded, fenced garden only accessible by the owner. The flat is fully furnished with a parking space and cellar storage. The Central Park Residence is situated on a slightly elevated part of the land overlooking the city and Prague Castle. Tonnes of conveniences are nearby; OC Flora shopping center, a rich selection of cafés and restaurants, Albert supermarket, a kindergarten school, a swimming pool, and Park Parukářka. The building is guarded 24 hours a day, has a reception, its own cafe and a private children's playground with a creek. Additional services induce ISS Facility Services, CPI Services, and cleaning of common areas. The building is conveniently located by a tram stop which takes you to the city center within 6 minutes. For more information or to arrange a viewing, please fill out the form below or give us a call.



ID	34232
Offer	Sale
Group	2+kk
Furnished	Furnished
Location	Pitterova 11/2855 Žižkov Praha
Ownership	Personal
Usable area	87 m ²
City	Prague
City district	Žižkov