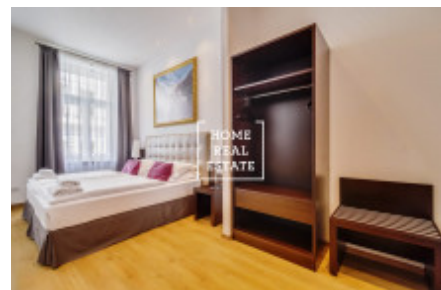
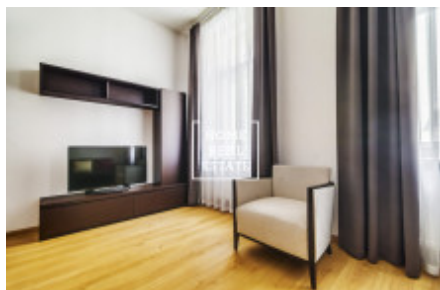
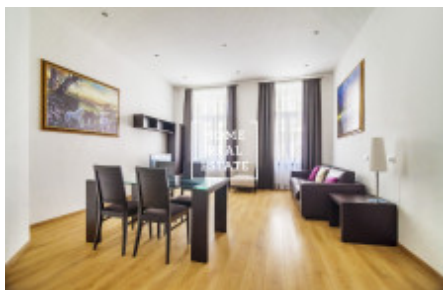


HOME
REAL
ESTATE

Rent flat 3+kk, 75 m2 - Resslerova



«Home Real Estate» exclusively offers to rent a 3+kk flat (75 m2), which is located in the popular part of Prague 2 - Nové Město.

This fully furnished apartment is located on the 5th floor of a reconstructed building just near the famous Dancing house. The apartment is full of light, very airy and spacious. The center of the flat is a sunny living room with open kitchen, dining table, studio couch and TV. The kitchen unit is fully equipped with all necessary electric appliances (fridge, stove, oven and extractor hood). The private part of the apartment includes 2 bedrooms with beds, wardrobes and writing table. The bathroom is equipped with shower, sink and toilet. Only high quality wooden floors and tiles are used all over the apartment. There is an air condition system installed in the flat.

Excellent transport availability — a tram stop is within walking distance, Karlovo náměstí metro station is 3-minute walk away. Wenceslas Square is 6 minutes away by tram or 2 minutes away by metro. There is a lot of possibilities for active lifestyle and relaxation: nearby river embankment is perfect for jogging and walks with a wonderful view and the Charles Square nearby is full of greenery and can be a place for a calm reading on a bench.

Prague 2 is known for its highly developed infrastructure full of shops, restaurants, banks, post offices, shops, restaurant, health centers, kindergartens, schools and parks. Basically, you will find everything you need for life within the walking distance. The nearest supermarkets are Albert and Tesco,

Total price: 38.000 CZK for rent + 4.500 CZK for utilities

To get more information about this property or to arrange a viewing, please contact us or fill in the form below, we will be glad to help you!

«Home Real Estate» has more than 650 satisfied clients since 2014

ID	34211	Offer	Rental
Group	3+kk	Furnished	Furnished
Location	Resslova 3/1774 Nové Město Praha	Ownership	Personal
Usable area	75 m ²	City	Prague
City district	Nové Město	Status	Realized