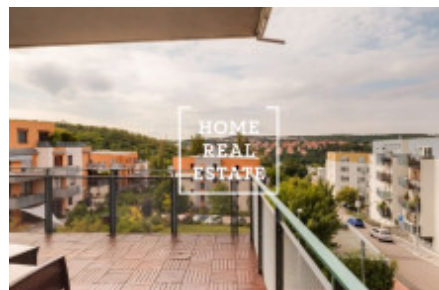
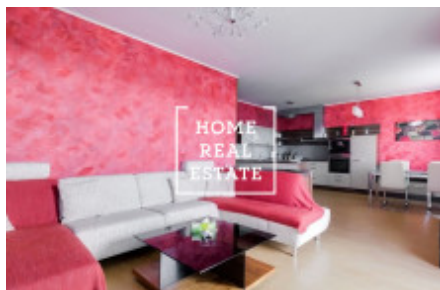


HOME
REAL
ESTATE

Rent flat 3+kk, 88 m² - Jeřabinová



«Home Real Estate» exclusively offers for rent a luxury 3 + kk apartment of 88 m² with terrace of 24 m² and balcony of 2 sqm, situated in a quiet area of Prague 5 - Smichov.

This location is very popular. In the vicinity you will find excellent civic amenities and a peaceful rest. Within walking distance is the green area of Sady na Skalce for active rest and relaxation. It is a great place for those who want to live near the city center (8 minutes by bus to Anděl), to use all the civic amenities, while living in a quiet place with the possibility of active rest.

Completely furnished apartment with large terrace, balcony and beautiful views, is situated on the 1st floor of a modern residential complex with underground parking. The interior of the apartment consists of living room with fully equipped kitchen and access to the terrace, 1 bedroom with balcony, studying room (2nd bedroom), bathroom with bath and toilet, guest toilet and entrance hall with built-in wardrobes. Laminate and tile flooring, manual sunblinds, washing machine, dishwasher, TV, garden furniture, cellar. One garage parking space available.

Excellent transport accessibility - bus stop within walking distance, 8 minutes to Anděl metro station.

Nearby are parks and nature reserves for free time. All services within reach (kindergarten, elementary school, children's playground, post office, restaurant, cinema, OC).

Apartment equipment: comfortable furniture, built-in appliances, kitchenette, bathtub, manual sunblind, washing machine, dishwasher, TV, garden furniture, cellar

Total price: 28 000 CZK + 4500 CZK charges

Deposit on monthly rent

The requesting client is charged with a commission of 1 monthly rent plus VAT.

For further information and flat overview arrangement please contact our real estate agent of fill the form below.

ID	33975	Offer	Rental
Group	3+kk	Furnished	Furnished
Ownership	Personal	Usable area	88 m ²
Parking	Yes	City	Prague
City district	Motol	Status	Realized