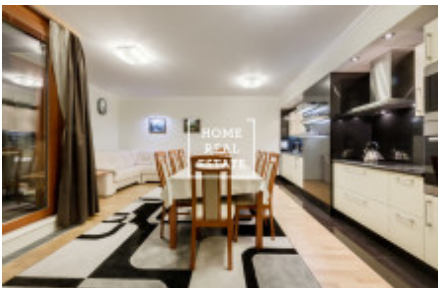


HOME
REAL
ESTATE

Sale flat 2+kk, 57 m² - Švejcárovo náměstí



This 73 Sqm flat, located on the south-east side of the 2nd floor in the Dalejsky Park Residence in Prague 5, is complete with a kitchen, bedroom, bathroom with toilet and a beautiful balcony. It features floating laminate flooring, large tiles, a fire door, an alarm system with video cameras, big wood windows, heating and air condition.

We have a wide portfolio of off-market offers in new residential buildings in Smíchov. For more offers that we do not publish online visit our website bytysmichov.com

It also comes fully furnished, and the price includes everything you see in the photos.

The building is located in very close proximity to the lovely and protected Prokop Valley (Prokopské Udolí), and is only 800 metres away from the Luzin metro station (line B), or about a 20 minute car ride to the city centre of Prague.

Nearby are several elementary and kindergarten schools, 2 shopping malls (Zlín and Galerie Nove Butovice), a sporting facility, a swimming pool, and a winter stadium.

With these features and the beautiful Prokop valley a short walk away, it really is a prime location for endless entertainment and recreation.

We have a wide portfolio of off-market offers in new residential buildings in Smíchov. For more offers that we do not publish online visit our website bytysmichov.com

ID	33915	Offer	Sale
Group	2+kk	Furnished	Furnished
Location	Švejcárovo nám. 2660/3, 155 00 Praha 13-Stodůlky, Česko	Ownership	Personal
Usable area	57 m ²	City	Prague
City district	Stodůlky	Status	Realized