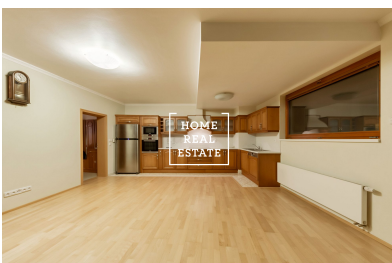
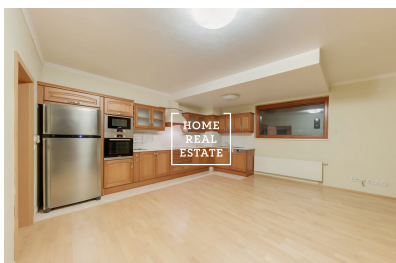


HOME
REAL
ESTATE

Sale flat 2+kk, 63 m2 - Švejšcarovo náměstí





This 57 sqm flat (2 + kk), located on the south-east side of the 2nd floor of the Dalejsky Park Residence in Prague 5, is complete with a living room and a kitchen, a bedroom, a bathroom with a toilet, as well as a nice balcony. It features floating laminate flooring, large tiles, and fire doors, an alarm system with video cameras, large wood windows, heating and air conditioning.

We have a wide portfolio of off-market offers in new residential buildings in Smíchov. For more offers that we do not publish online visit our website bytysmichov.com

It also comes fully furnished and with 2 spaces in the underground parking lot, and the price includes everything you see in the photos.

The building is close to the Prokop Valley and is only 800 meters from the Luzin metro station (line B), or about a 20-minute car ride to the city centre of Prague.

Nearby are several elementary and kindergarten schools, 2 shopping malls, a sports facility, a swimming pool, and a winter stadium. With these features and the beautiful Prokop Valley a short walk away, it is a prime location for endless entertainment and recreation.

We have a wide portfolio of off-market offers in new residential buildings in Smíchov. For more offers that we do not publish online visit our website bytysmichov.com



ID	33914
Offer	Sale
Group	2+kk
Furnished	unfurnished
Location	Švejcárovo nám. 2660/3, 155 00 Praha 13-Stodůlky, Česko
Ownership	Personal
Usable area	63 m ²
City	Prague
City district	Stodůlky