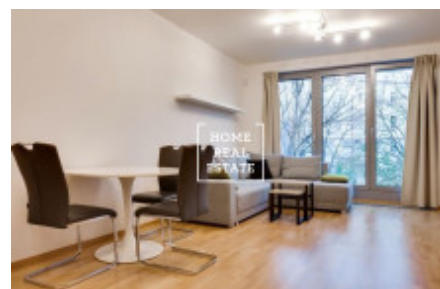
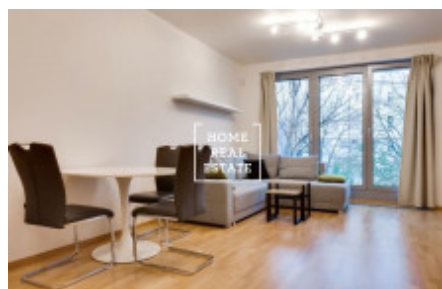
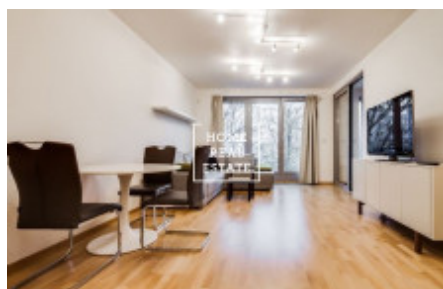
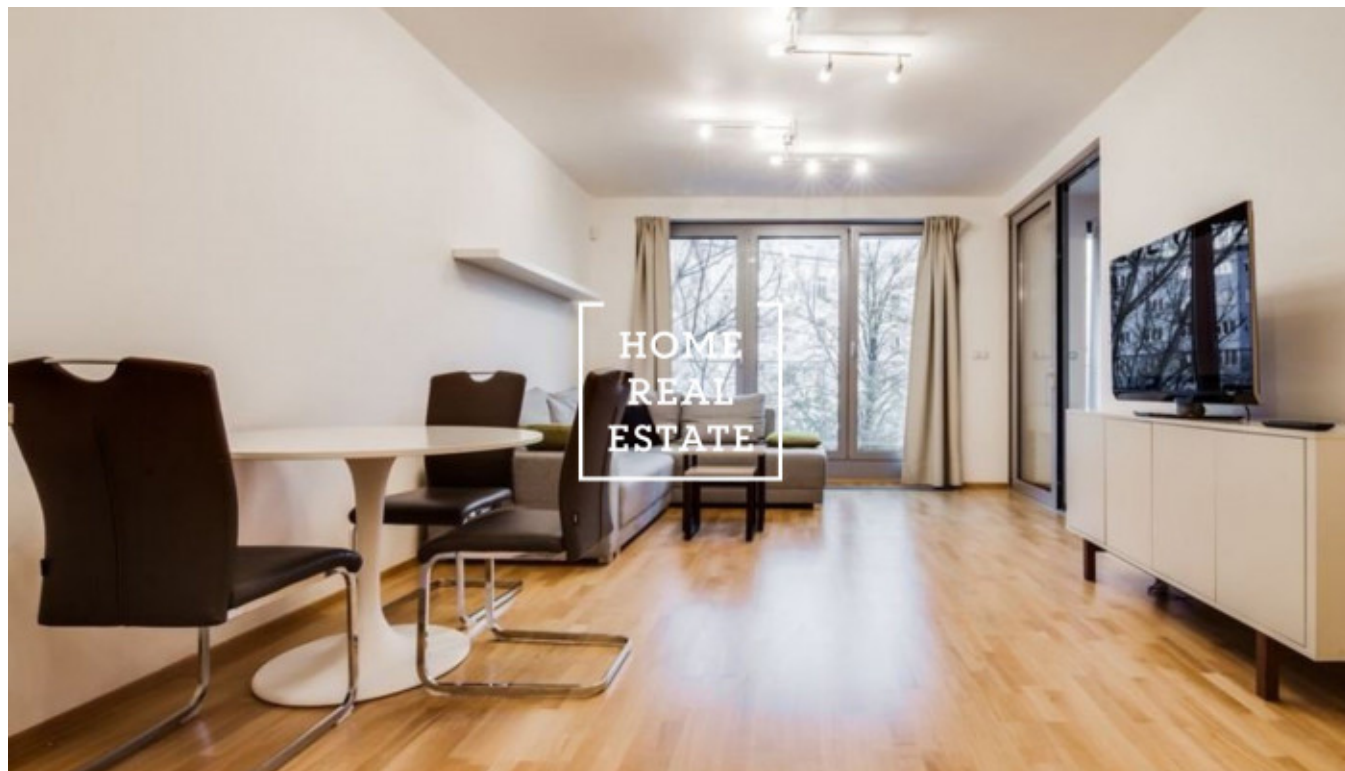


HOME
REAL
ESTATE

Rent flat 2+kk, 60 m2 - Vojenova



«Home Real Estate» with the exclusive mandate from the owner offers to rent a 2+kk flat with a terrace and small garden with the full area of 70 m², situated in the Residence „Libeňské terasy“ in a calm and quiet part of Prague 8 - Libeň.

This fully furnished flat is situated on the 3rd floor of a new building. The layout of the flat includes living room with corner couch, TV, kitchen unit and access to the winter garden, bedroom with double bed and access to the balcony, bathroom with bath, sink, washing machine and toilet.

Kitchen unit includes all necessary electronic devices (stove, extractor hood, oven and fridge).

Only high quality floors and tile are used all over the flat.

The building is equipped with elevator.

Flat is situated in a beautiful residential complex „Libeňské terasy“, a calm location full of greenery. You will find many possibilities for relaxation and all family activities here, same as all necessary public amenities. Nature lovers will enjoy „Thomayerovy sady“ and „Pod Korábem“ parks nearby. The building is situated close to the river embankment and the Libeň island, which are really picturesque places perfect for the evening walks. This a very frequented place for those who want to live in a calm district close to nature and to be close to the city center (it takes only 10 minutes to get to the Wenceslas Square by metro).

Excellent transport accessibility: bus and tram stops are within walking distance, and the nearest metro station Palmovka (line B) is just a few stations away from the downtown.

Available now

Pets are accepted

Price: 22.600 CZK for rent + 3.200 CZK for utilities + 800 CZK for electricity

To get more information about this property or to arrange a viewing, please contact us or fill in the form below, we will be glad to help you!

ID	33882	Offer	Rental
Group	2+kk	Furnished	Furnished
Location	Vojenova 11, Praha 8- Palmovka, Česko	Ownership	Personal
Usable area	60 m ²	Parking	Yes
City	Prague	City district	Libeň
Status	Realized		