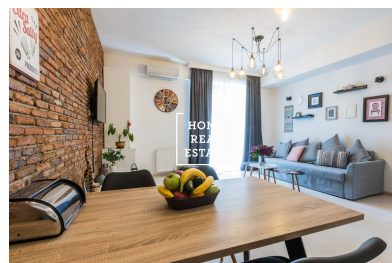
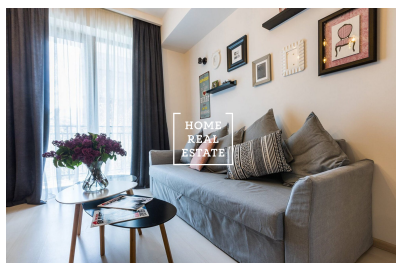
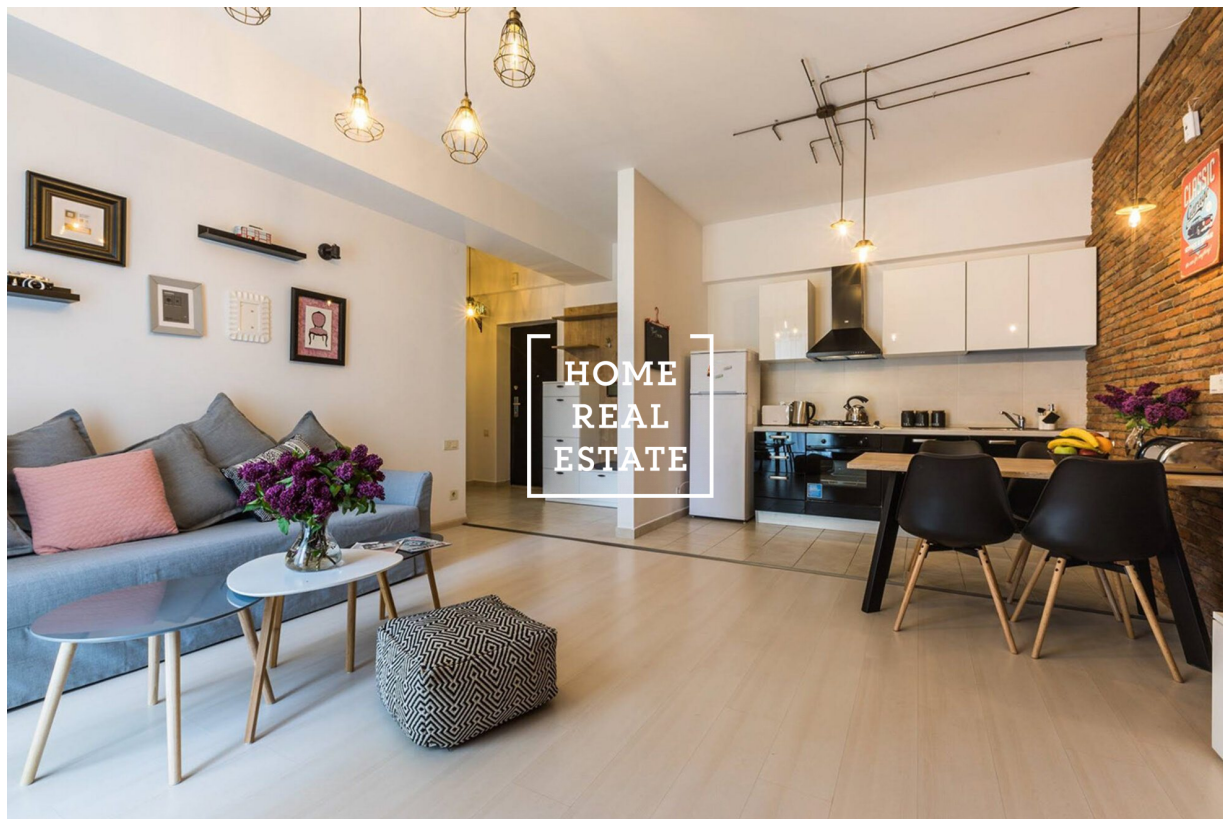


HOME  
REAL  
ESTATE

## Sale flat 1+kk, 27 m<sup>2</sup> - Na spojce





«Home Real Estate» offers to buy a studio flat with the full area of 27 m<sup>2</sup> in a residential complex in a very frequented part of Prague 10 – Vršovice.

Flat is situated on the 3rd floor of a reconstructed building with elevator.

The layout of the flat features living room with kitchen unit (20,8 m<sup>2</sup>), bathroom with toilet (3 m<sup>2</sup>) and entrance hall (1,9 m<sup>2</sup>). Basement cellar (1,8 m<sup>2</sup>) is also a part of the flat.

Flat will be constructed according to the White Wall standart, which means unlimited space for the final design. High quality floors, tiles, doors and toilet will be installed in the flat.

Full public amenities in the area: kindergarten, school, shops, post office, health center, shopping mall Eden (900 m away) with Tesco hypermarket, Grebovka park with cycle track.

Excellent transport accessibility: tram stop Bohemians 280 m away, tram and bus stop Čechovo náměstí 200 m away.

Moving in from October, 2019

Price: 3.409.000 CZK including agency commission

Pictures shown are for illustration purpose

To get more information about this property, please contact us or fill in the form below, we will be glad to help you!



ID	<a href="#">33877</a>
Offer	Sale
Group	1+kk
Furnished	Partially furnished
Location	Na Spojce 610/6, 101 00 Praha 10-Vršovice, Česko
Ownership	Personal
Usable area	27 m <sup>2</sup>
City	<a href="#">Prague</a>
City district	<a href="#">Vršovice</a>