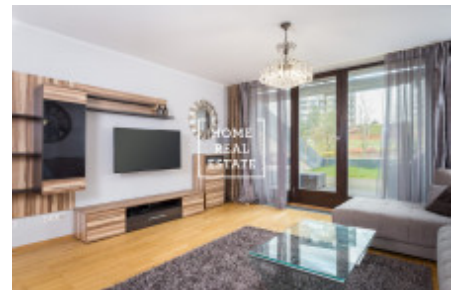
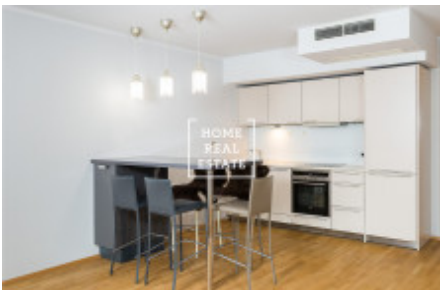


HOME
REAL
ESTATE

Rent flat 2+kk, 87 m2 - Pitterova



«Home Real Estate» exclusively offers to rent a 1-bedroom townhouse with the full area of 87 m², with 2 terraces (14 m²) and a garden (53 m²), situated in residential project Central Park in a popular city part Prague 3 - Žižkov.

Fully furnished townhouse is situated on the 1st floor of a new building. Layout of the flat includes living room with a couch, dinner table and kitchen unit equipped with all necessary electronic devices, bedroom with double bed and two wardrobes, bathroom with bath, sink and toilet, and entrance hall.

Living room has access to the terrace, while bedroom features entry to the winter garden.

Flat price includes cellar and parking place.

Central Park Residence, located in a calm district close to the city center, is one of the best and most popular residential complexes in Prague. Living in Central Part means comfort and safety, the area is equipped with reception and security system. There is a large garden with greenery inside the complex with the direct access the buildings.

All public amenities are within walking distance from the complex: shopping mall Flora with shops and services, restaurants nearby, supermarket Albert, kindergarden and swimming pool. „Parukářka“ park is also a few minutes walk from the residence.

Excellent transport accessibility - tram station just in front of the complex, Želivského metro station is 4 minutes by walk.

Available from 1.06.2019

Price: 40.000 CZK including utilities + electricity and gas

Deposit is 41.000 CZK

To get more information about this property or to arrange a viewing, please contact us or fill in the form below, we will be glad to help you!

ID	33704	Offer	Rental
Group	2+kk	Furnished	Furnished
Location	Pitterova 11, Praha 3- Žižkov, Česko	Ownership	Personal
Usable area	87 m ²	City	Prague
City district	Žižkov	Status	Realized