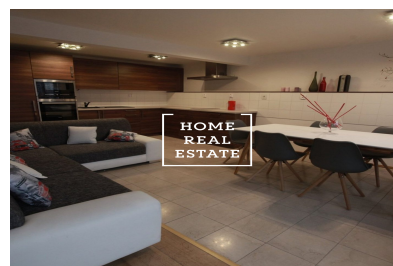
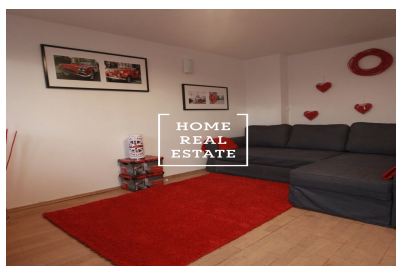


HOME
REAL
ESTATE

Rent commercial other, 100 m2 - Gorazdova



**HOME
REAL
ESTATE**



«Home Real Estate» offers for rent a flat 2+1 with terrace a total area of 100 m², which is located in a popular location of Prague 2 - Nové Město.

It is located within walking distance of the Charles Square, and you can get to the city center by tram (only 6 minutes) or metro (2 minutes). There is an excellent transport availability and also a lot of space for active lifestyle and pleasant walks along the river. At the Charles Square you will find lots of greenery, and here you can spend a lot of time reading or just sitting on a bench.

Fully furnished apartment is located on the 7th floor of the building after reconstruction near the Dancing house. The apartment is full of light, very airy and spacious. The center of a flat is a sunny living room with a studio couch and TV. The kitchenette is fully equipped with all necessary electric appliances (fridge, cooker, oven, extractor hood) and a dining table. In the private part of the apartment are 2 bedrooms with beds, wardrobes and writing table. The bathroom with a bath, sink and WC. High quality wooden floors and tiles.

Excellent transport availability - tram stop within walking distance, metro Karlovo náměstí 3-minute walk. Close to restaurants, city center, waterfront. You can reach Wenceslas Square in 6 minutes by tram or in 2 minutes by metro.

Infrastructure offers different places to visit: banks, post office, shops, restaurant, health center, supermarkets Albert and Tesco, kindergarten, school, gymnasium, parks, a pleasant space for relaxation and recreation.

Furnishing: furniture, en-suite electrical appliances, kitchenette, shower enclosure, wooden floor, TV

Total price: 39. 000 CZK + utilities.

For further information and flat overview arrangement please contact real estate agent or fill the form below.



ID	33528
Offer	Rental
Group	Other
Furnished	Furnished
Location	Gorazdova 1993/7, 120 00 Praha- Nové Město, Česko
Ownership	Personal
Usable area	100 m ²
City	Prague
City district	Nové Město