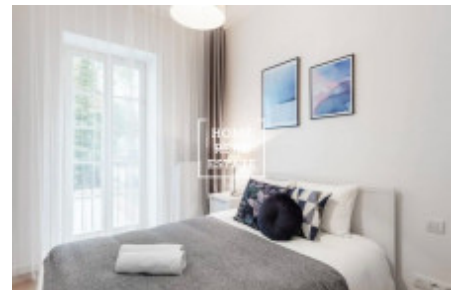
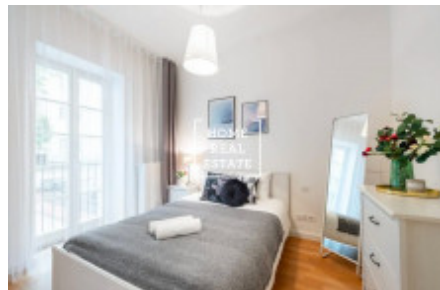


HOME  
REAL  
ESTATE

## Rent flat 2+kk, 50 m2 - Soukenická



Home Real Estate offers to rent a comfortable apartment 2+kk with the full area of 50 m<sup>2</sup>, located in prestigious district Prague 1 - New town.

The fully furnished apartment is situated on the 2nd floor of a brick building. The apartment consists a sunny living room with an equipped kitchen (including a dishwasher) and a dining area, a separate bedroom with a large double bed and a bathroom.

The house is located right in the center of Prague, in the elegant aristocratic and oldest area, where you can find various Prague sights and State institutions in the district. Well-developed infrastructure around: Lidl supermarket (300 m), Lane park (280 m), main capital shopping mall - Palladium (450 m) and wide choice of restaurants and cafes, including the restaurant and club - Fashion Club & Restaurant Prague (600 m).

Excellent transport accessibility - nearby is Petrské náměstí bus stop and Masarykovo nádraží tram stop, Náměstí republiky metro station (line B) is just 550 meters from the house.

Price: 16,000 CZK + utilities: 4,000 CZK.

Deposit: 20,000 CZK.

Sublease is prohibited.

For more information about this property or to arrange the viewings, just fill in the form below, and we will contact you as soon as possible to arrange a date of viewing of an apartment that will suit you.

ID	<a href="#">33438</a>	Offer	Rental
Group	2+kk	Furnished	Furnished
Location	Soukenická 45, Nové Město, Praha, Česko	Ownership	Personal
Usable area	50 m <sup>2</sup>	City	<a href="#">Prague</a>
City district	<a href="#">Nové Město</a>	Status	Realized