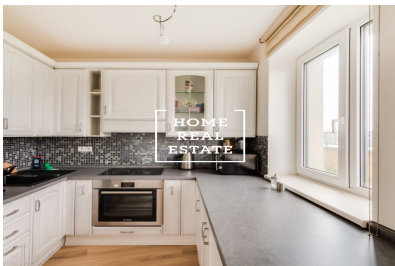


HOME
REAL
ESTATE

Sale flat 2+kk, 66 m2 - Nárožní, Praha 5



**HOME
REAL
ESTATE**



«Home Real Estate» offers for sale a residential unit 2 + kk + loggia with a size of 11.4 m², which is located in the new building of the Stodůlky Residence, in a quiet and peaceful locality of Prague 5 - Stodůlky. The apartment is located on the 3rd floor of a new building from 2013. The residential project is located in Nárožní Street near the residential area of old Stodůlek and close to the university. The standard includes floating floors, tiles, furnished bathroom with heating ladder, panel radiators, kitchen, security fire entrance door, telephone connection. The layout of the apartment offers a bedroom of 18.4 m², a bathroom of 5 m², a hall of 3.6 m², a living room with a kitchenette of 29.9 m² and an entrance to the loggia of 11.4 m². The apartment also has a bedroom of 18.4 m² and a toilet of 1.7 m², all with a total living area of 66.4 m². The apartment includes a parking space in the garage and a cellar. The house is accessible for cable TV and fast internet connection. Service fees are based at CZK 3,731 + electricity. The location offers a wide range of civic amenities - kindergarten and primary school 200 m away, playgrounds, sports fields, medical facilities, pharmacies, post office. Central Park in particular encourages active relaxation. Passive relaxation will be offered by Metropole Zličín, Avion Shopping Park, or the more distant Galerie Nové Butovice with many shopping opportunities. Access to the center within 15 minutes is provided by the Hůrka metro station line B. Bus stops are only 3 minutes from the house. Transport accessibility: bus stop "Bucharova" (no. 174, 149, 137) and in 3 minutes you can get to the metro station Hůrka (line B). Total price: 5.500.000, - CZK + REA commission. For more information and the possibility of a tour, contact the broker or fill out the form below.



ID	32122
Offer	Sale
Group	2+kk
Furnished	Furnished
Location	Nárožní 7a/2787 Stodůlky Praha
Ownership	Personal
Usable area	66 m ²
City	Prague
District	Praha 5
City district	Stodůlky