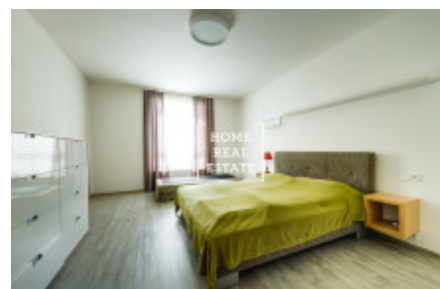
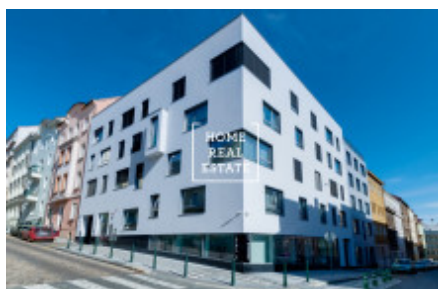
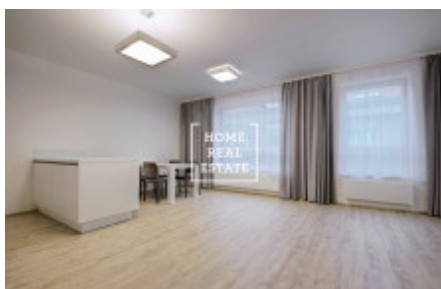


HOME
REAL
ESTATE

Rent flat 2+kk, 70 m² - Rybalkova, Praha 1



«Home Real Estate» offers for rent a luxury flat 2+kk of 70 sqm size, located in Residence Donská in sought after location Prague 10 - Vršovice.

Partly furnished apartment is located on the 5th floor of a new building. The apartment is very sunny, airy and spacious. Living room is connected with kitchen unit and features sofa, dinner table and TV-table. Kitchen unit is equipped with all necessary electrical appliances (fridge, glass-ceramic hob, oven, microwave, extractor hood). There is separate private bedroom in the apartment. There is also a washing machine and dryer.

There are high quality floors and tiles all over the flat. Internet and TV connection is included in the price. Apartment also includes a parking space in the garage and cellar. Windows are equipped with outdoor remote control shutters.

This locality is popular. In the surroundings you will find excellent civic amenities combined with calmness and quietness of the neighbourhood. There is a wide range of restaurants and cafés nearby. There are Grebovka park and Havlickovy sady for active rest and relaxation within walking distance . This is a very popular place for those who want to live in the city center (12 minutes by public transport to Wenceslas Square) and enjoy all its advantages, while living in a quiet place with the possibility of active rest.

Excellent transport accessibility - bus and tram stop within walking distance, Náměstí míru metro station (only 3 minutes from the city center).

Available from 14.6.2019

Total price: 20 .000 Kč + 5.600 utilities (incl. parking place, internet, TV, electricity).

Used images are from a similar flat.

To get more information and arrange a view please contact our agent or fill in the form below.

| | | | |
|-------------|------------------------------------|---------------|---------------------------|
| ID | 31983 | Offer | Rental |
| Group | 2+kk | Furnished | Furnished |
| Location | Rybalkova 8/943 Vinohrady Praha | Ownership | Personal |
| Usable area | 70 m ² | City | Prague |
| District | Praha 1 | City district | Vinohrady |
| Status | Realized | | |