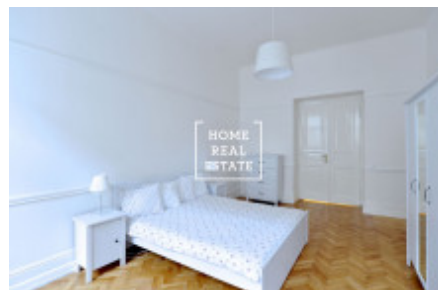
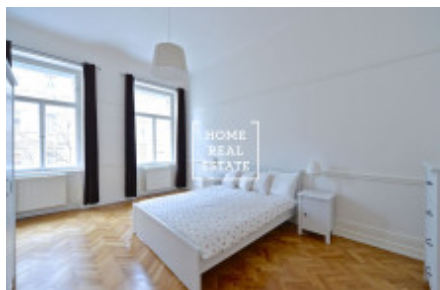
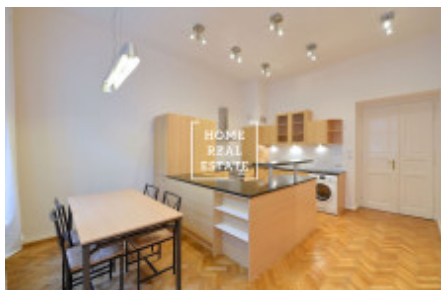
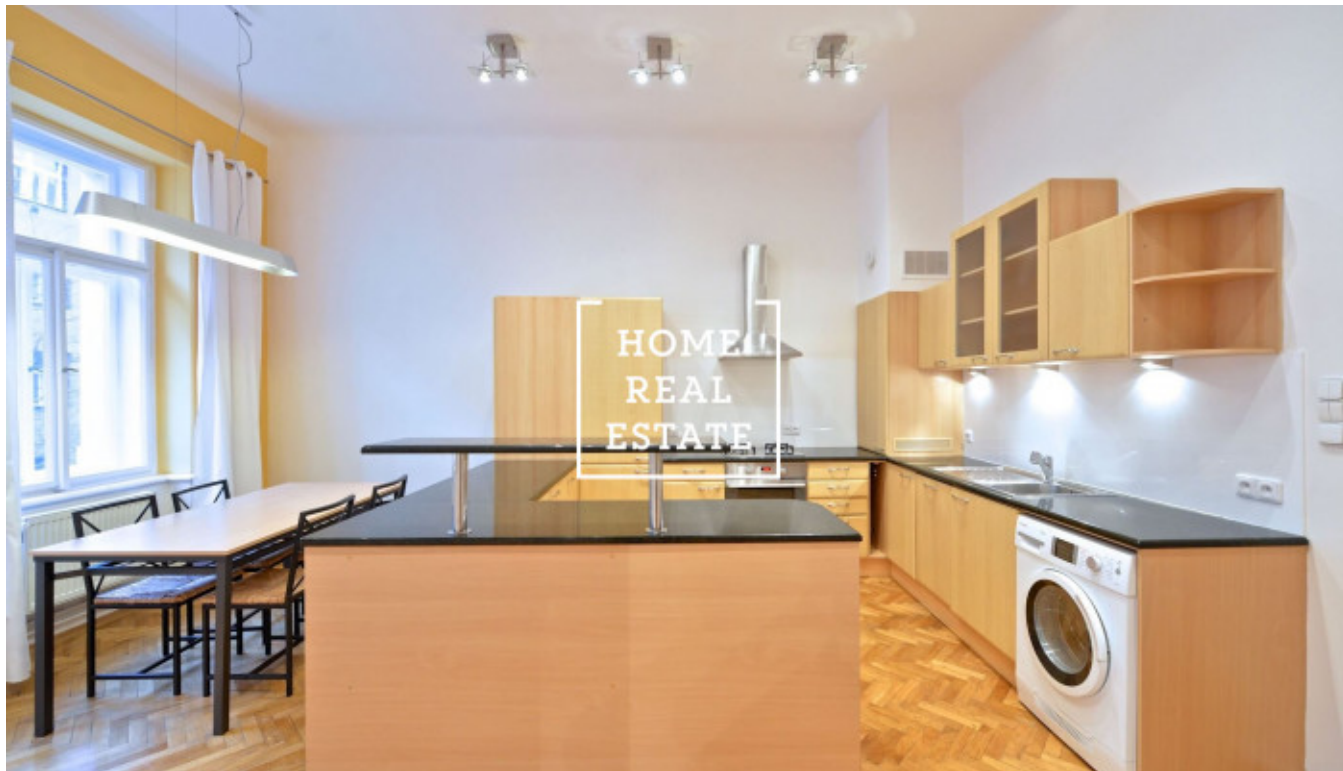


HOME  
REAL  
ESTATE

## Rent flat 3+1, 105 m2 - Mánesova, Praha 1



«Home Real Estate» offers a 3+1 apartment (105 m<sup>2</sup>) for rent in one of the most prestigious parts of Prague - Vinohrady.

This stylish and spacious apartment is located on the 2nd floor of a historical corner building in Vinohrady, Prague 2. The apartment layout includes a large living room, a separate fully equipped kitchen (including dishwasher, washing machine and dryer), two bedrooms, bathroom with bathtub and two sinks, and WC. A balcony is another great advantage of the apartment.

The house is equipped with elevator and video entry phone. There is satellite and internet connection in the apartment.

The building is situated in the heart of Vinohrady. Right over the corner is Riegrovy sady park, which is considered the most beautiful park in Prague. Not only does it offer an unforgettable view on the whole city from its hills, but also it is a perfect place for sport and relax: you can jog here, have some yoga class, visit the famous beer gardens or just sit on the grass enjoying warm summer evening. There is also a swimming pool, athletics track, plenty of restaurants and two children playgrounds just near the Riegrovy sady. Jiřího z Poděbrad Square is 5-minute walk away, and Wenceslas Square is 10-minute walk away in the opposite direction.

Excellent transport accessibility: Vinohradská tržnice and Italská tram stops are a few minutes away. Jiřího z Poděbrad (line A) metro station is just 550 m away.

Price: 32500,- CZK for rent + 6000,- CZK for utilities (incl. electr., gas, water)

Garage parking is not included in this price

To get more information about this property or to arrange a viewing, please contact us or fill in the form below, we will be glad to help you!

«Home Real Estate» is more than 650 happy clients since 2014.

ID	<a href="#">31827</a>	Offer	Rental
Group	3+1	Furnished	unfurnished
Location	Mánesova 50, Vinohrady, Česko	Ownership	Personal
Usable area	105 m <sup>2</sup>	City	<a href="#">Prague</a>
District	<a href="#">Praha 1</a>	City district	<a href="#">Vinohrady</a>
Status	Realized		