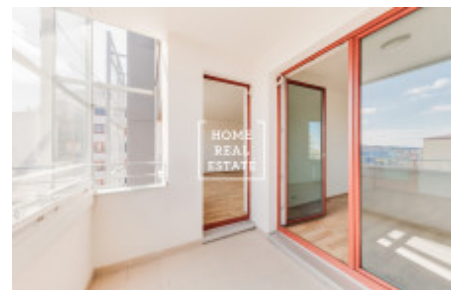
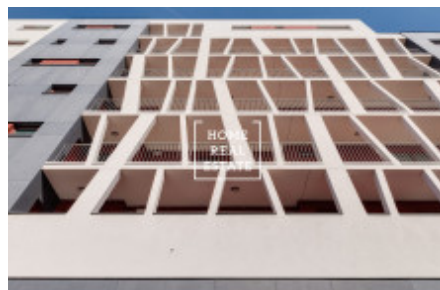
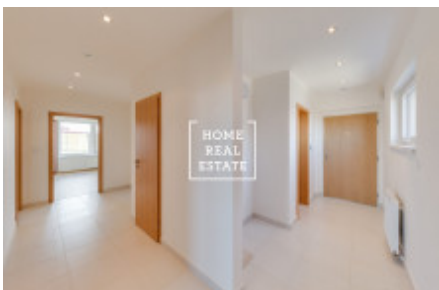


HOME
REAL
ESTATE

Sale flat 3+kk, 82 m² - Švehlova, Praha 4



„Home Real Estate“ offers to buy a 2-bedroom flat with the full area of 82,7 m² (including balcony) and basement (5,9 m²), situated in Prague 10 - Záběhlice.

Entirely new unfurnished flat is situated on the 2nd floor of a new building in Švehlova street and is oriented to the calm inner courtyard. There were no tenants in this flat.

The layout of the apartment includes:

- living room with kitchen unit - oriented to the south-west
- 2 bedroom - oriented to the west
- large entrance hall with space for ensuite wardrobe
- separated bathroom with bath and sink
- separated toilet
- glassed balcony with access to the living room and bedroom

The price also includes:

- spacious basement (6m²)
- large parking place in the underground car park

There are all public amenities nearby: supermarkets Penny, Albert and Lidl, restaurants, coffee shops, fitness, health facilities, kindergarten, shopping mall Hostivař with shops, services and cinema. Hostivař nature park nearby is a perfect place for walking and open air activities.

Good transport accessibility: tram station Sídliště Zahradní Město is a few minutes walk away from the building. It takes 10 by tram to get to the nearest metro station Nádraží Hostivař (line A).

Price 5.900.000 CZK + commission to the real estate agency

To get more information about this property or to arrange a viewing, please contact us or fill in the form below, we will be glad to help you!

| | | | |
|-------------|--|---------------|---------------------------|
| ID | 31792 | Offer | Sale |
| Group | 3+kk | Furnished | Partially furnished |
| Location | ulice Švehlova 3333/21, PSČ 106 00 Praha 10 -Záběhlice | Ownership | Personal |
| Usable area | 82 m ² | City | Prague |
| District | Praha 4 | City district | Záběhlice |
| Status | Realized | | |