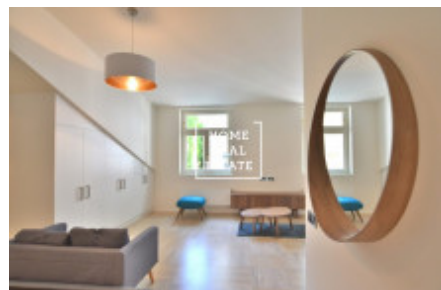
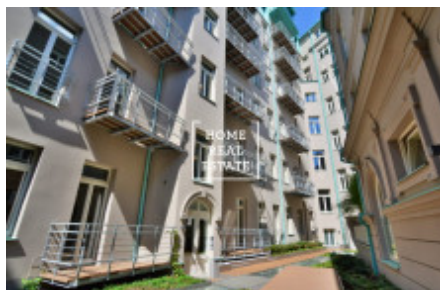


HOME  
REAL  
ESTATE

## Rent flat 1+kk, 36 m2 - Spálená, Praha 1



„Home Real Estate“ offers to rent a studio flat with the full area of 32 m<sup>2</sup> in residence Spalena 5 in Prague 1 - New Town.

This fully furnished stylish flat is situated on the 3rd floor of a fully reconstructed building. The flat layout includes large living room with kitchen unit equipped with all necessary electronic devices, couch, double bed and ensuite wardrobe, and a bathroom with shower cabin, sink and toilet.

Only high standard materials are used in the flat: wooden windows, wooden parquet floor, wooden entrance doors, high-quality sanitary ware and so on.

The apartment is located in the absolute center of Prague 1 near Národní třída, Wenceslas Square and the Vltava River. Metro station B - Národní třída and the newly revitalized park on Charles Square are just a few meters from the building. The surrounding area is full of hotels, shopping centers, banks, offices and shops, bringing the highest possible comfort of life. The current administrative building is completely converted into a multifunctional building with commercial premises on the ground floor. The building has a 24/7 reception.

Available now

Price: 22.000 CZK for rent (VAT) + 5.500 CZK for utilities

Refundable deposit: 2 month rent

Possibility of renting a parking place for an extra fee.

To get more information about this property or to arrange a viewing, please contact us or fill in the form below, we will be glad to help you!

ID	<a href="#">31778</a>	Offer	Rental
Group	1+kk	Furnished	Furnished
Location	Spálená 84/5, Nové Město, Česko	Ownership	Personal
Usable area	36 m <sup>2</sup>	City	<a href="#">Prague</a>
District	<a href="#">Praha 1</a>	City district	<a href="#">Nové Město</a>
Status	Realized		