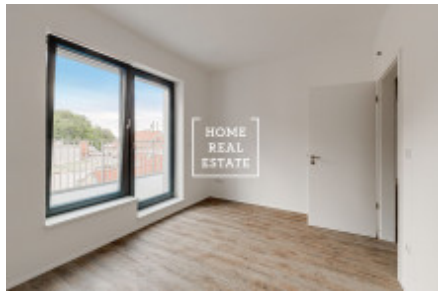
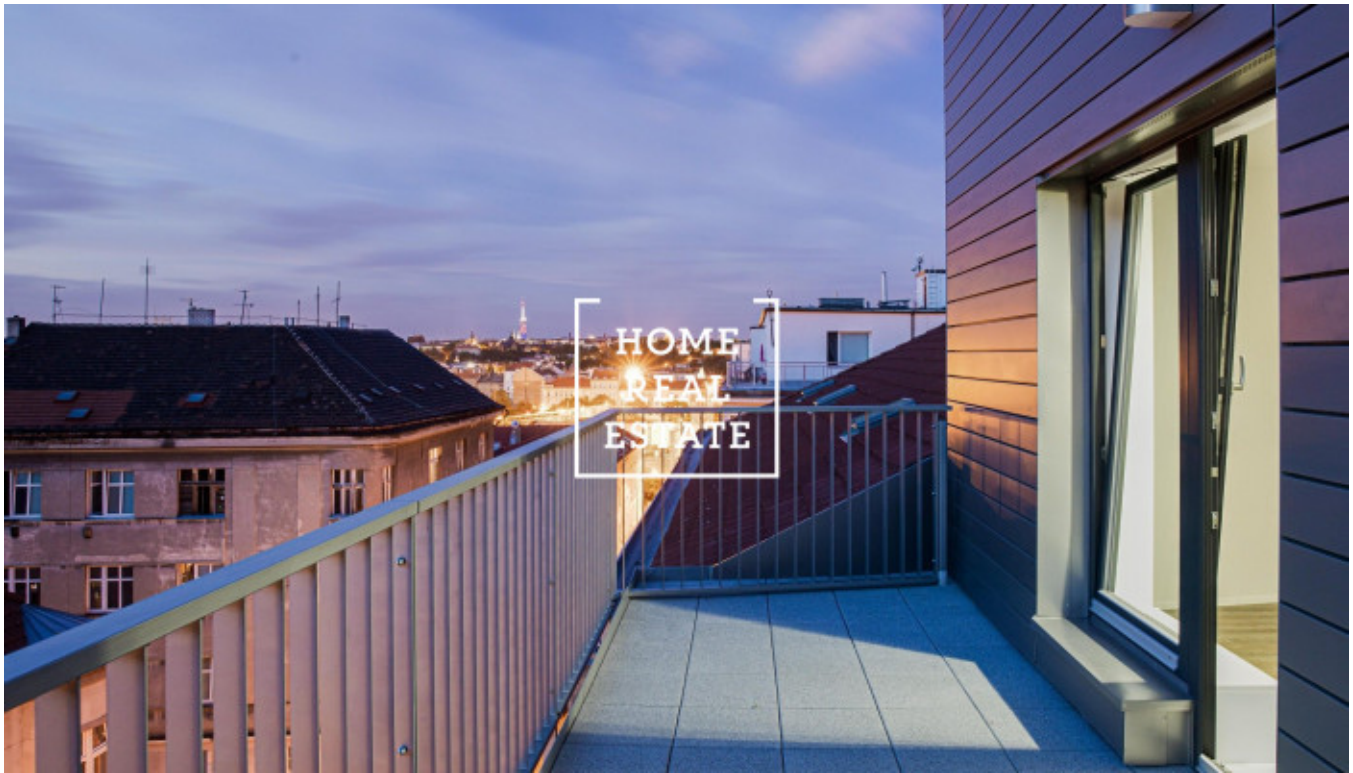




Sale flat 3+kk, 106 m² - Pod Barvířkou, Praha 5



«Home Real Estate» offers to buy a 2-bedroom flat with the full area of 78,7 sqm with a balcony (6,1 sqm) and a large terrace (21,6 sqm) , situated in Mélange in a frequented part of Prague 5 - Smíchov.

We still have several units of this type left in this residence. Do not hesitate to request for more information.

SPECIAL OFFER: Second garage parking for free till 30.11.19.

We have a wide portfolio of off-market offers in new residential buildings in Smíchov. For more offers that we do not publish online visit our website bytysmichov.com

Completely new unfurnished flat with north and south orientation and high ceilings (2,8 m) is situated on the 6th floor of a new building. The flat layout includes a living room with kitchen unit (21,3 sqm), 2x bedrooms (13,1 sqm a 13,5 sqm), entrance hall (14,8 sqm), bathroom with toilet (4,8 sqm) and a separate toilet (1,7 sqm).

The apartment is made in high standards: luxurious wooden floors Vinyl Winflex by Floor Experts, interior doors Vetos, bathroom with stylish ceramic tiles Graniti Fiandre Core Shade, wall-hung toilet and sink from Villeroy & Boch. Cooling preparation is installed.

Rezidence Mélange is a new project inspired by German functionalism, yet nicely fitting into one of the most important historical areas of Prague. Its main features are the location in the city center in a very promising part of the city with good transport accessibility, really nice, modern exterior and interior design, top standards of furnishing and a high level of construction.

The residence is located in the southern part of Smíchov, on a hill between Paví vrch and Dívčí Hrad, 40 meters above the Vltava River. It is perfect for those who want to live near a busy Angel and yet have the peace and privacy provided by Pod Brentovou Street.

Good transport accessibility: tram station Braunova is just near the building and it takes just 7 minutes by tram to get to Anděl (metro and tram station).

Full price: 9.480.000 CZK including VAT and agency fee. You do not pay the 4% tax on the property.

The price includes cellar. Possibility of buying a parking place in the residence carpark.

To get more information about this property or to arrange a viewing, please contact us or fill in the form below, we will be glad to help you!

We have a wide portfolio of off-market offers in new residential buildings in Smíchov. For more offers that we do not publish online visit our website bytysmichov.com

ID	31752	Offer	Sale
Group	3+kk	Location	Pod Barvířkou 2258/16, 150 00 Praha 5-Smíchov, Česko
Ownership	Personal	Usable area	106 m ²
City	Prague	District	Praha 5
City district	Smíchov	Status	Realized