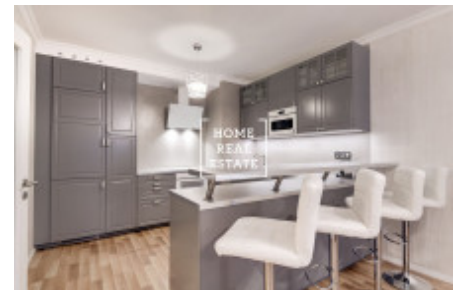
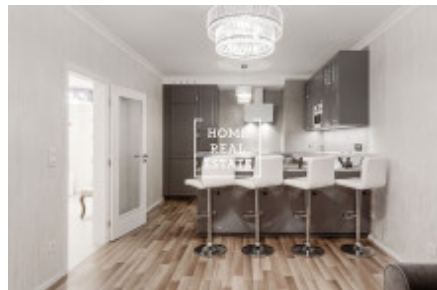
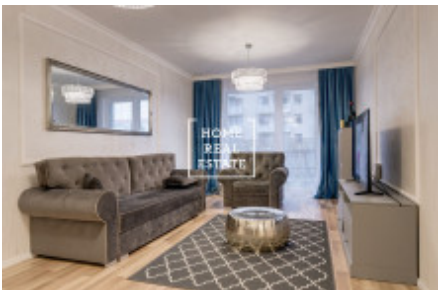


HOME  
REAL  
ESTATE

## Rent flat 3+kk, 85 m2 - Zvěřinova, Praha 10



«Home Real Estate» offers for rent a 3 + kk apartment with a size of 85 m<sup>2</sup>, located in the Tulipa residence in the desired part of Prague 3 in Třebešín, in Zvěřinová Street. The apartment is located in an apartment building. The apartment, which is very bright and spacious, has 2 TVs. The layout consists of a living room with kitchenette, two bedrooms, bathroom, toilet and a spacious hallway. There is also a balcony. It is possible to park in the underground part of the house. Modern living near the center of Prague will allow you to be in five minutes in the Třebíč park full of greenery or in the shopping center Atrium Flora (5 minutes) or NC Gallery Harfa (within 20 minutes). There is a kindergarten in the place of residence, so this apartment is ideal for young families with children. The primary school and grammar school can be found in a quiet part of Malešice (15 minutes from the house). Civic amenities also include services such as post office, restaurants, bars, sports center. Medical care can be found at the Vinohrady University Hospital, 5 minutes away. Nature is also represented by the Malešice park, which is about 15 minutes from the house. In terms of transport, the Černý most metro station is about 20 minutes from the house. The southern connection offers a practical connection to the city center within ten minutes. To move in immediately. Total price: 25.000, - rent + 5400, - utilities + electricity Deposit: 40.000, - Price includes parking in the garage

|             |                                  |               |                           |
|-------------|----------------------------------|---------------|---------------------------|
| ID          | <a href="#">31685</a>            | Offer         | Rental                    |
| Group       | 3+kk                             | Furnished     | Furnished                 |
| Location    | Zvěřinova 7,<br>Strašnice, Česko | Ownership     | Personal                  |
| Usable area | 85 m <sup>2</sup>                | City          | <a href="#">Prague</a>    |
| District    | <a href="#">Praha 10</a>         | City district | <a href="#">Strašnice</a> |
| Status      | Realized                         |               |                           |