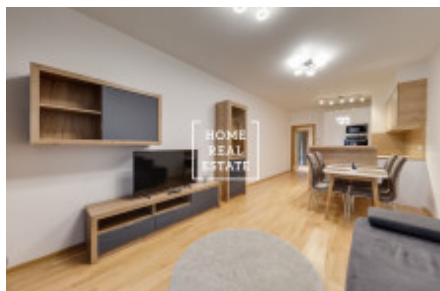
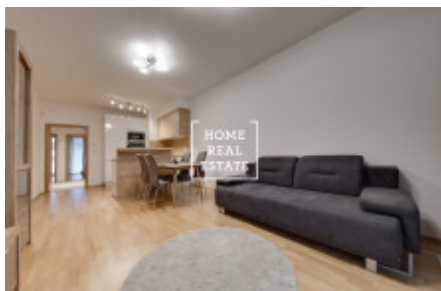


HOME  
REAL  
ESTATE

# Rent flat atypical, 90 m<sup>2</sup> - Nekvasilova, Praha 8



«Home Real Estate» offers to rent a 3+kk apartment 90 m<sup>2</sup>, which is located in Prague 8 - Karlín. The spacious and stylish flat is situated on the second floor of a new building in Prague 8 - Karlín. The layout of the flat includes a living room with kitchen unit, 2 bedrooms, bathroom, separate WC, utility room with washing machine and dryer, and entrance hall. Large terrace is another great advantage of the apartment.

Only high-quality materials are used in the whole apartment interior: new wooden floors, and stylish tiles. The kitchen unit is equipped with all necessary electronic appliances (ceramic stove, en-suite oven, fridge and a microwave oven). Bedrooms features double beds with night tables and wardrobes. Bathroom is equipped with bathtub and sink. There is an en-suite wardrobe in the entrance hall.

There is parking for residents and cellar in the basement of the building.

Excellent transport accessibility: Invalidovna tram and bus stop is just a on-minute walk away, Invalidovna metro station (line B) is also situated within the walking distance from the building.

Full amenities with walking distance: shops, restaurants, parks and many others. The nearest large supermarket is Albert (200 m from the house).

Price: CZK 31.000,- for rent + CZK 6.000,- utility payments

For more information about this property or to arrange a viewing, please contact us or fill in the form below, we will be glad to help you!

Are you tired of looking for a suitable apartment?

We will create a personal selection for you. Work with us will also give you an access to the apartments before they are placed on the Internet portals.

Leave the request below, and our manager will select suitable apartment offers based on your criteria.

«Home Real Estate» has more than 650 satisfied clients since 2014

ID	<a href="#">31643</a>	Offer	Rental
Group	Atypical	Location	Nekvasilova
Ownership	Personal	Usable area	90 m <sup>2</sup>
City	<a href="#">Prague</a>	District	<a href="#">Praha 8</a>
City district	<a href="#">Karlín</a>	Status	Realized