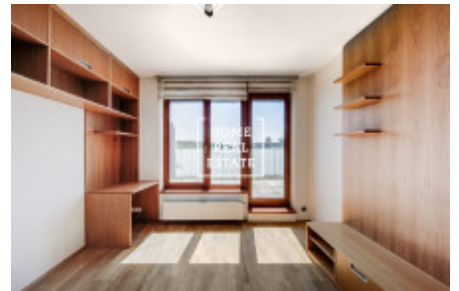


HOME
REAL
ESTATE

Sale flat atypical, 185 m² - Na Císařce, Praha 5



«Home Real Estate» with the exclusive mandate of the owner offers to buy a 2-story 4-bedroom apartment (185 sqm.) with above-standard terrace (54.6 sqm.) with a panoramic view of Prague, situated in the residence Císařka in a lucrative and picturesque part of Prague 5 - Smíchov.

We have a wide portfolio of off-market offers in new residential buildings in Smíchov. For more offers that we do not publish online visit our website bytysmichov.com

Partly furnished apartment oriented to the South and west is located on the 4th and 5th floor of a five-story brick building with elevator. The center of the living zone consists of a spacious and bright living room with kitchen area, staircase leading to the second floor of the apartment and access to the above-standard terrace with panoramic views of the quiet green part of Prague's Smichov. The modern kitchen is equipped with all necessary appliances, including a built-in coffee machine and a wine refrigerator. 4 rooms are situated on the second floor of the apartment, two of which are designed as children's, the other two as a bedroom and a study room. The bathroom with toilet is equipped with a large bath, bidet and two sinks.

The apartment is made according to high standards and corresponds to the condition of a brand new apartment after a completed minor reconstruction . Air-conditioning system, beech parquet and ceramic tiles on the floors, euro windows with external blinds. Another advantage of the apartment is a really large amount of storage space (mainly wall shelves) in each room and hallways.

The Císařka Residence was built in 2 stages by the renowned developer FINEP and the general contractor Metrostav near the former vineyard of the same name. Stage I in the western part of the plot with about 207 apartments was completed in 2007.

Transport accessibility: bus stop Spiritka (aprox. 650 m away) and tram stop Kotlářka (750 m away) with direct connection to the district center Anděl station with all amenities: a large shopping center, multiplex cinema, restaurants and parks. The city center can be reached in less than 10 minutes by car.

Total price: on request

The price includes a parking space in the underground garage of the house.

In case of interest, the apartment layout, important links with information about the location and information about the utilities will be sent to your email address.

Are you interested in a viewing? Just fill in the form below and we will call you as soon as possible to arrange a suitable date of viewing.

We have a wide portfolio of off-market offers in new residential buildings in Smíchov. For more offers that we do not publish online visit our website bytysmichov.com

ID	31611	Offer	Sale
Group	Atypical	Furnished	Furnished
Location	Na Císařce 18, Praha 5-Smíchov, Česko	Ownership	Personal
Usable area	185 m ²	City	Prague
District	Praha 5	City district	Smíchov
Status	Realized		