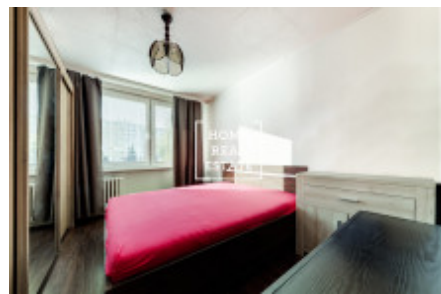
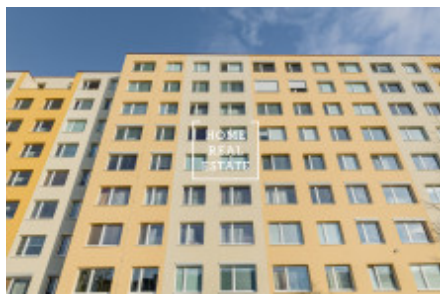
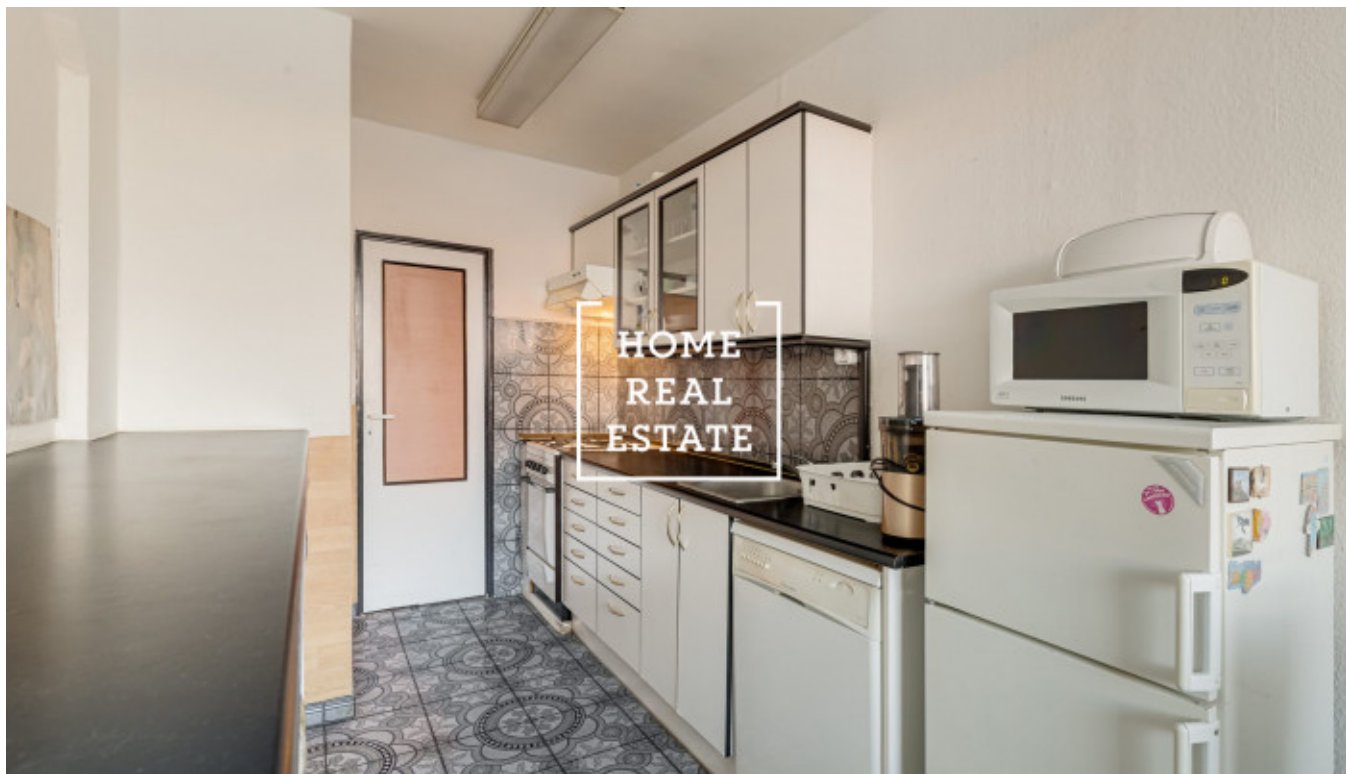


HOME
REAL
ESTATE

Rent flat atypical, 75 m² - Suchý vršek, Praha 5



The company "Home Real Estate" in the exclusive representation of the owner offers for rent an apartment 3 + KK with a size of 75 m² + 10 m² balcony, situated on the 1st floor in a very quiet, but at the same time developed location Prague 5 - Stodůlky. The house is located in a residential area near the metro B (yellow line) Hůrka. The apartment is fully equipped with furniture according to the photo, including dishes and electrical appliances + by agreement with the owner, things can be removed according to the client's wishes. The layout consists of: -3 spacious rooms, -large hallway with dressing room toilet and bathroom -large glass loggia, which overlooks the school and playground, facing east. (Photo from a similar apartment) In the immediate vicinity of the house, all civic amenities are provided. The Galerie Nové Butovice shopping zone is located here, where, among other things, the Albert retail chain is represented. The house is located near several office buildings Metronom Business Center, Explora Business Center, Aspira Business Center, Coral Office Park, Lipa Center, Gallery Nové Butovice. Most prestigious private schools - kindergartens and primary schools, such as the German School in Prague, the Jaroslav Heyrovsky Grammar School, the Waldorf Primary School, the Tyršová Primary School and many others, are concentrated in Prague 5- Stodůlky. At the same time in this locality there is a Golf club Motol, Tennis club, Football club Motorlet and several courses. Transport accessibility: metro station „Hůrka (line B) is within distance (approx. 4 minutes on foot) and at the same time direct connections to the airport. For rent and move in immediately. Total price: 17.499 CZK + 5000 CZK utilities including electricity and internet. Deposit 1 month rent. For more information and the possibility of a tour, contact the broker or fill out the form below.

ID	31581	Offer	Rental
Group	Atypical	Furnished	Furnished
Location	Suchý vršek 2136/5, Praha 13-Stodůlky, Česko	Ownership	Personal
Usable area	75 m ²	City	Prague
District	Praha 5	City district	Stodůlky
Status	Realized		