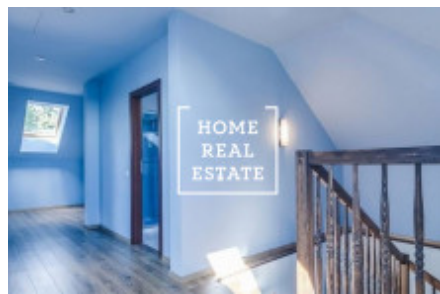
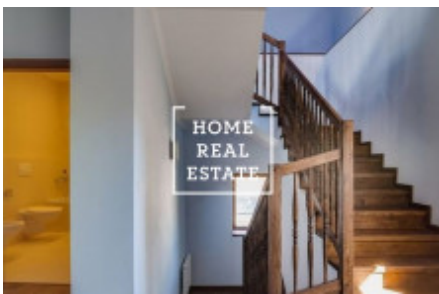
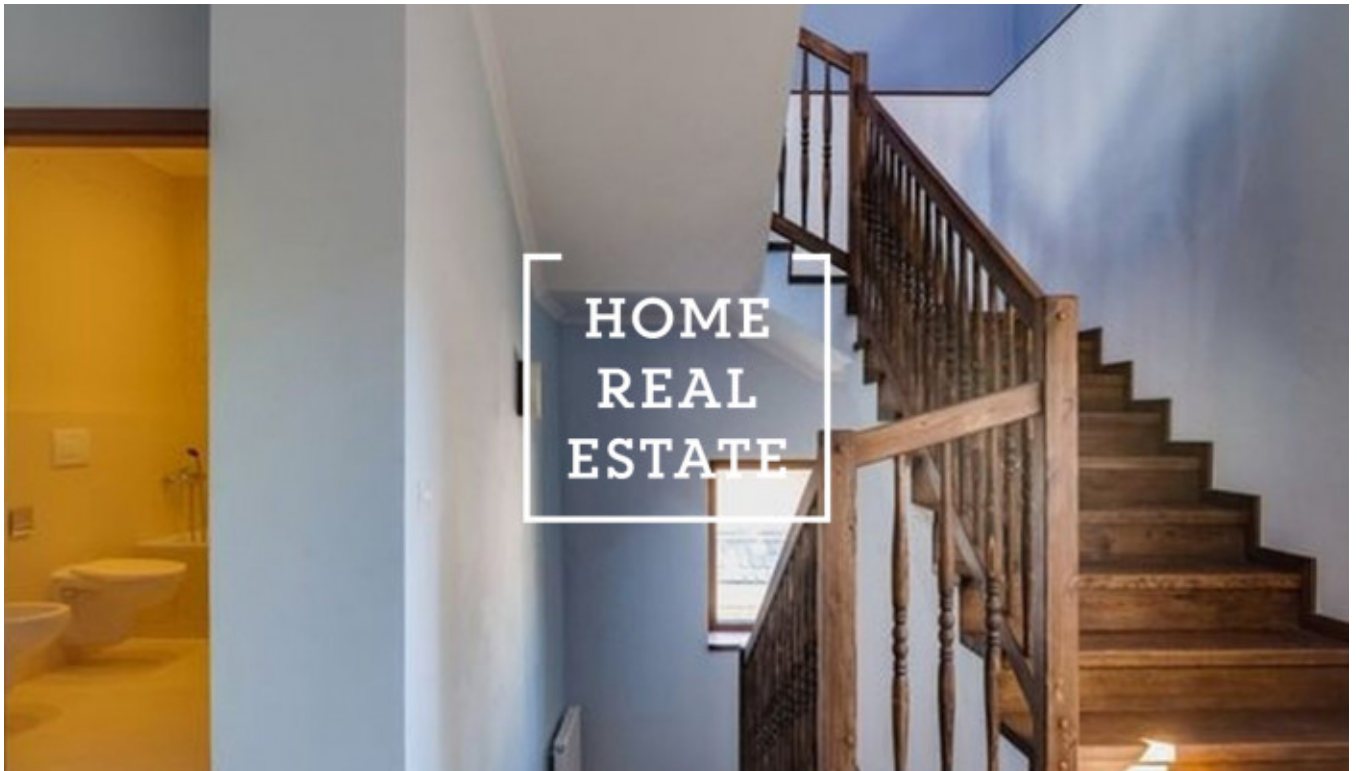


HOME
REAL
ESTATE

Rent commercial other, 407 m2 - K Novému dvoru, Praha 4



«Home Real Estate» exclusively offers for rent a luxury villa 8 + 1 with a size of 407 m², located in a quiet area of Prague 4 - Lhotka. The villa is completely renovated, which took place in accordance with the rules of cultural heritage. Only the historic walls and the statue of Antonín Dvořák remain on the facade, all the interiors of the houses are completely new. The floors are filled with quality tiles and solid parquet. All colors were carefully chosen by the owner, each room has its own atmosphere and of course for each floor is a toilet with shower or bath. The floors are filled with quality tiles and solid parquet. All colors were carefully chosen by the owner, each room has its own atmosphere and of course for each floor is a toilet with shower or bath. There is a safe in the house, imported from the Russian Federation, which will hide your treasures well. On the first floor is a large hallway with room, kitchen, toilet and entrance to the garage for 1 car. On the second and third floors there are individual rooms that can easily accommodate both a large family and a medium-sized company. The garden has a terrace and a newly built gazebo, which you could use in the future for family sitting, barbecue, relaxation, etc. In the basement of the house is a cellar with three large rooms (You can make a wine cellar, gym, laundry or use it to store some things) . The house was basically made for the owner's housing, but in the end they decided to rent it, so we could guarantee the quality of the materials from which the villa is built. The entrance security door is made to measure. Parking is directly in front of the house for guests / visitors and another parking space - the garage is directly in the house. Also very important for families with children is that I am within easy reach of "The Prague British School". In fact, after inspecting and picking up this property, we could state that the air in this location is relatively fresher than the air close to the center (with the fact that you travel to the center 5 minutes longer than from Pankrac, for example). We also got to know the overall atmosphere of this location and we can say that it is very quiet, green, clean and well populated. Excellent transport accessibility - bus stop Sulická (buses № 196, 106, 139, 121, 117, 910, 901) is within walking distance. You can also get to the Kačerov metro station by bus in 5 minutes. The owner is willing to buy more furniture. It is suitable for business purposes. Price: 65,000 CZK + utilities For more information and the possibility of a tour, contact the broker or fill out the form below.

ID	31119	Offer	Rental
Group	Other	Usable area	407 m ²
City	Prague	District	Praha 4
City district	Lhotka	Status	Realized