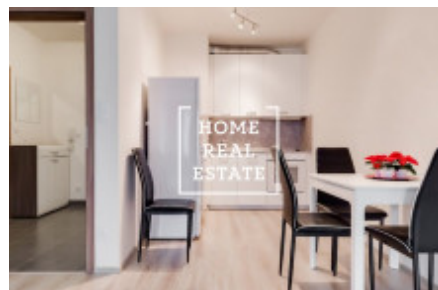
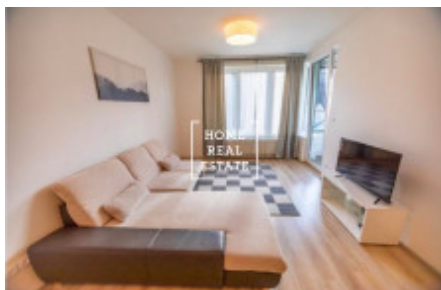


HOME  
REAL  
ESTATE

## Rent flat 2+kk, 52 m2 - Vrchlického, Praha 5



The company "Home Real Estate" in the exclusive representation of the owner dares to offer for rent a 2 + kk apartment with a total area of 55.45 m<sup>2</sup> in the project "Residence Vrchlického", which is situated on the border of Smíchov and Košířů. This is a bright southern apartment on the 4th floor with an area of 52.51 m<sup>2</sup> and a balcony (3.16 m<sup>2</sup>). Apartment model: trouble-free floating floors and tiles, floating laminate floor with interlocking joint, terminated by a perimeter strip, embossed large-format tiles, fireproof entrance doors, French plastic windows with painted exterior, radiators, consumption meters, etc., in which there is a hallway (4, 57 m<sup>2</sup>), living area (43.71 m<sup>2</sup>) which is divided into living room + kk and bedroom, bathroom with toilet (4.23 m<sup>2</sup>) and balcony (3.16 m<sup>2</sup>). However, the layout of the apartment in a small size frame is made so that each member of the family has their own space, which makes it as comfortable as possible for life. The project is implemented in energy class B. Residence "Vrchlického" - a new low-energy residential project. The residence is designed as one building with two entrances, where one entrance is led from Vrchlického Street and the other from Hlaváčkova Street. Transport accessibility: tram stop "Klamovka". Accessibility to OC "Nový Smíchov" and metro Anděl is 6 minutes. Price: 20500, - CZK + 3500, - CZK fees For more information about the property or to arrange a tour of the house, contact us, we will be happy to help you.

ID	<a href="#">30241</a>	Offer	Rental
Group	2+kk	Location	Vrchlického 18/7 Smíchov Praha
Ownership	Personal	Usable area	52 m <sup>2</sup>
City	<a href="#">Prague</a>	District	<a href="#">Praha 5</a>
City district	<a href="#">Košíře</a>	Status	Realized