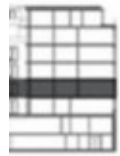


Rent flat 2+kk, 47 m2 - Primátorská, Praha 8



BYT 2.07



- 01 PŘEDSÍŇ
- 02 KOUPELNA
- 03 OBÝVACÍ POKOJ+KK
- 04 LOŽNICE
- 05 SKLEP

PRODEJNÍ PLOCHA BYTU ...
PRIMÁTOR



BYT 2.07



- 01 PŘEDSÍŇ
- 02 KOUPELNA
- 03 OBÝVACÍ POKOJ+KK
- 04 LOŽNICE
- 05 SKLEP

PRODEJNÍ PLOCHA BYTU ...
PRIMÁTOR



- 01 PŘEDSÍŇ
- 02 KOUPELNA
- 03 OBÝVACÍ POKOJ+KK
- 04 LOŽNICE
- 05 SKLEP

PRODEJNÍ PLOCHA BYTU ...



BYT 2.07



- 01 PŘEDSÍŇ
- 02 KOUPELNA
- 03 OBÝVACÍ POKOJ+KK
- 04 LOŽNICE
- 05 SKLEP

PRODEJNÍ PLOCHA BYTU ...
PRIMÁTOR

The company «Home Real Estate» exclusively offers for sale a 2 + kk apartment unit with a size of 46.7 m² + parking and a cellar. The apartment is located on the 2nd floor and has a parking space and a cellar, which are already included. The apartment consists of a living room (26.3 m²) with the necessary communication to connect the kitchen and access to the balcony, hallway, bathroom is connected to the toilet, bedroom (12.1 m²) In the project "Apartment house Primátorská" emphasis is placed on functionality and aesthetics of housing units. The comfort of living is completed by large windows up to the floor, which ensures maximum lighting of your apartment. At the same time, the project is conceived as an energy-efficient building, thanks to which the operating costs associated with housing in the project will be very low. "Bytový dům Primátorská" is directly connected to the large park "Pod Korábem", which is the green heart of the locality. Living in a quiet park and at the same time within reach of the city center is an ideal combination of an active lifestyle. Shops, offices and public transport are a few minutes' walk from your new home. Families with children will appreciate the proximity of the school and kindergarten, which are within walking distance. The park "Pod Korábem" is a popular place for leisure activities and in the wider area you will find other green areas such as "Thomayerovy sady" and the natural monument "Bílá skála". In the "Thomayerovy sady" there is also a sports complex with a football field and tennis courts. In the hot summer, you will also appreciate the nearby outdoor swimming pool "Stírka". The main cycle route leading through the whole of Prague along the Vltava, which is also suitable for roller skates, leads only a few steps from the house. "To Troja Zoo" will take you only 14 minutes by bike and you will ride the vast majority of the length of the route along the bike path. Transport accessibility: tram and bus stops "U Kříže". The center can be reached by car in 15 minutes thanks to the exit of the Blanka tunnel in Troja. Total price: 4,975,000 CZK, including commissions and all fees. Of course, you can also finance the property with a mortgage loan. Are you interested in a tour of the project? Just fill out the form below, we will call you as soon as possible and arrange a project inspection date that will suit you.

ID	30025	Offer	Rental
Group	2+kk	Ownership	Personal
Usable area	47 m ²	Parking	Yes
City	Prague	District	Praha 8
City district	Libeň	Status	Realized