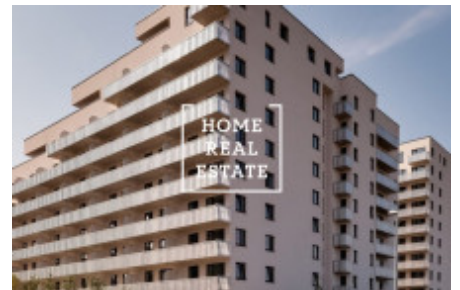
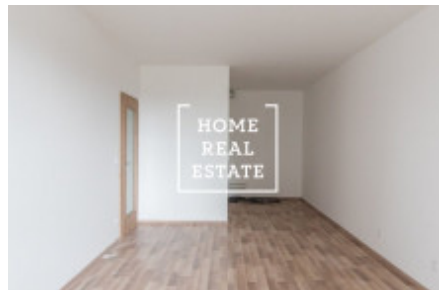
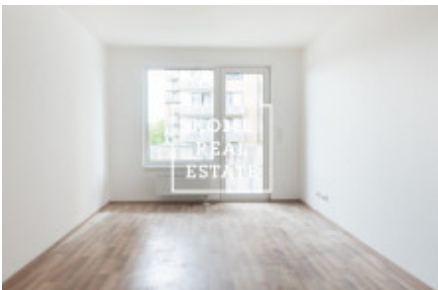




Sale flat 1+kk, 33 m2 - Zvěřinova, Praha 10



«Home Real Estate» on behalf of the owner offers a 1 + kk apartment on the 8th floor of the Tulipa Třebešín project. Tulipa Třebešín project - a new low-energy residential project, growing on the border of Prague's Žižkov and Malešice. The project consists of semi-enclosed blocks of new houses with terraces sloping to the south. The structure of the building is made of reinforced concrete and thermal insulation from mineral wool is used to reduce energy costs. Apartment standards: threshold-free floating floors and tiles, embossed large-format tiles, fire-proof entrance doors, plastic windows with painted exterior, radiators, consumption meters, etc., The building will be implemented in energy class B. Commissioning will take place in 2020. You do not pay property transfer tax (4%). The cellar is included in the price of the apartment. Parking spaces can be purchased. The new houses are located in the immediate vicinity of the Atrium Flora shopping center or the picturesque Třebešín Park, where you can indulge in relaxation, sports or a walk. The location has a wide range of all necessary services from the Czech Post to schools, kindergartens, restaurants and many sports centers. Only a 10-minute walk from the residential project from Wenceslas Square attracts potential applicants to realize their home. The development project does not forget even the smallest and their parents. The Třebešín park, which surrounds the apartment complex, becomes a perfect refuge for spending free time. Inside the park you will find a safe and modern playground. In addition, there is great communication with the center and other parts of Prague, thanks to the nearby metro station Želivského, which can be reached by walking within 15 minutes. This property is interesting for a potential buyer due to the lowest price on the market compared to the price offer from the developer. Are you interested in a tour of the project? Just fill out the form below, we will call you as soon as possible and arrange a project inspection date that will suit you.

ID	30016	Offer	Sale
Group	1+kk	Ownership	Personal
Usable area	33 m ²	City	Prague
District	Praha 10	City district	Strašnice
Status	Realized		