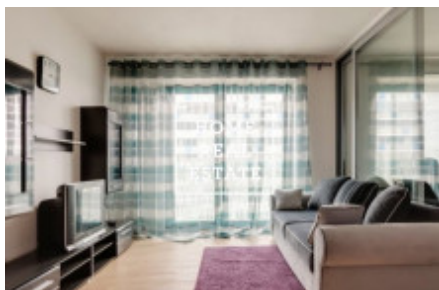


HOME  
REAL  
ESTATE

## Sale flat 3+kk, 79 m2 - Olšanská, Praha 3



«Home Real Estate» offers for sale a 3 + kk apartment unit with a net usable area of 79.3 m<sup>2</sup> with two winter terraces of 14.9 m<sup>2</sup>, located in the Garden Towers residential project in the sought-after locality of Prague 3 - Žižkov. Furnished apartment is located on the 6th floor of a new building. The layout of the apartment includes a large living room connected to a dining area for 4 people and a modern kitchen: with a ceramic hob, built-in oven, refrigerator, extractor hood, kettle and microwave. In the second part of the room is a relaxation area with sofa and TV, so a pleasant separate workplace, where you will not be disturbed by any noise. The apartment also includes two fully equipped separate rooms, in which there is a bed, couch, TV, wardrobe, also a work place. The price includes one parking space and a cellar. Area of individual rooms: Hall - 12.1 Bathroom - 3.8 Living room + kk - 31.0 Room No.1- 14.5 Room No.2 - 13.9 WC - 1.9 Dressing room - 2.1 Winter garden - 7.2 Winter Garden - 7.7 Total area: Usable area - 79.3 Winter Gardens - 14.9 The Residence Garden Towers residential complex, located in Olšanská Street in Prague 3 - Žižkov, is the most important development project implemented in the wider center of Prague for the last 25 years. The new building was built in 2016. The Žižkov area is located in the wider center of Prague and, thanks to complete civic amenities and excellent transport accessibility anywhere in Prague, is one of the most attractive locations for living. It is difficult to imagine a better location that would allow residents to live literally in the center of events and at the same time in peace and greenery. Within walking distance is the park "Parukářka". Non-Stop reception with security camera system: - Supervision of security, order and functionality of common areas and the surroundings of the residential area. - Continuous inspection of the camera system with recording and several times a day inspection of the apartment building and its surroundings. - Reception services in Czech and English: picking up postal items and parcels, ordering services, announcing a visit to apartment owners, information services, parking lot service, etc. service. - Provide first aid and a defibrillator if needed. Excellent transport accessibility - tram stop "Olšanská" (No. 9, 26, 91, 95) is within walking distance, metro station Želivského 4 minutes by tram (only 6 minutes to the city center). For more information and the possibility of a tour, contact the broker or fill out the form below.

ID	<a href="#">30006</a>	Offer	Sale
Group	3+kk	Furnished	Furnished
Ownership	Personal	Usable area	79 m <sup>2</sup>
Parking	Yes	City	<a href="#">Prague</a>
District	<a href="#">Praha 3</a>	City district	<a href="#">Žižkov</a>
Status	Realized		