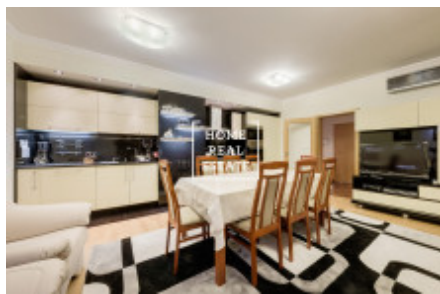
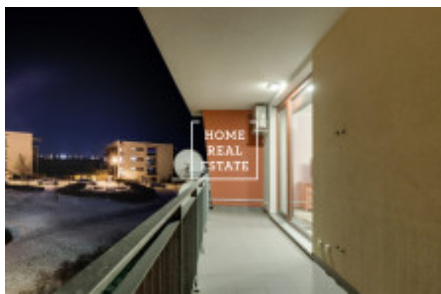
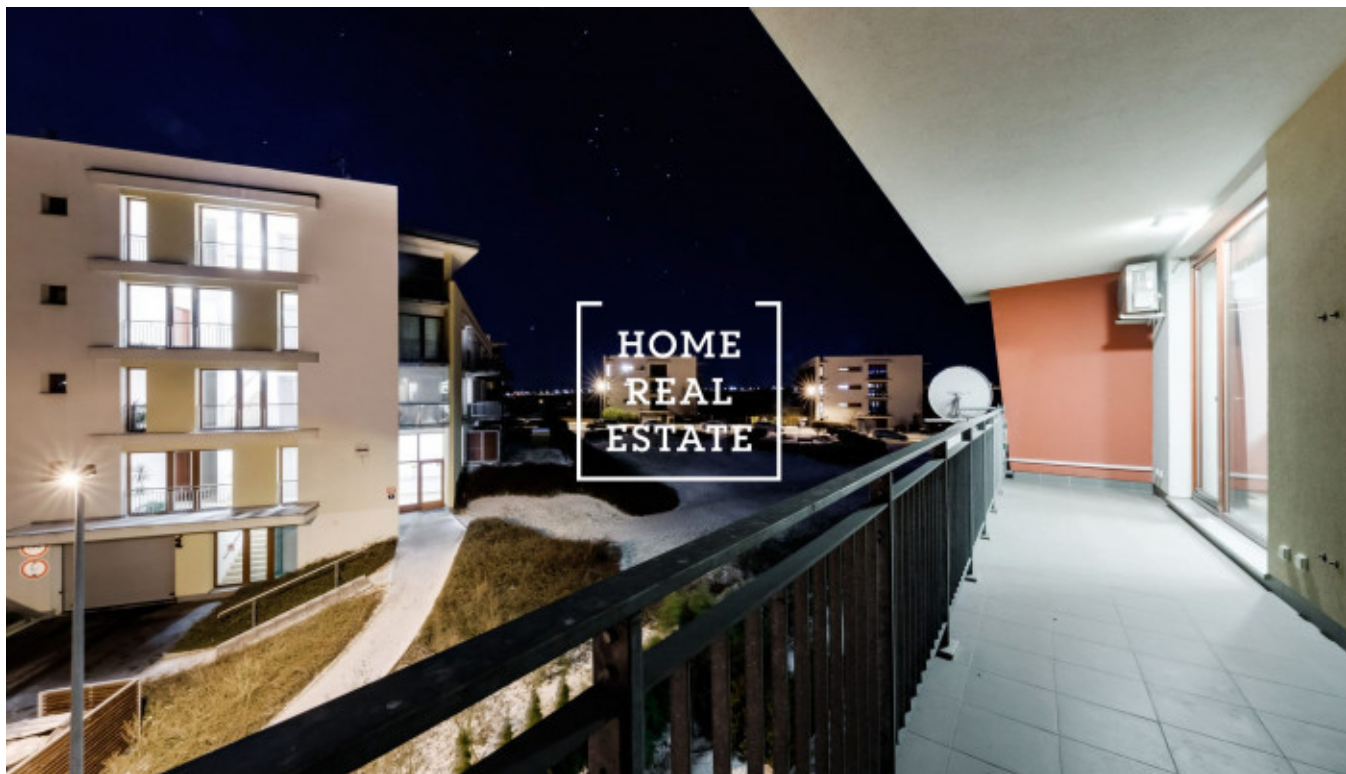


HOME  
REAL  
ESTATE

## Sale flat 2+kk, 57 m<sup>2</sup> - Švejcárovo náměstí, Praha 5



The company "Home Real Estate" offers for sale a 2 + kk apartment of 57 m<sup>2</sup> in the Dalejský park residential complex from the developer Central Park. We have a wide portfolio of non-public offers in new buildings in Smíchov. For more offers that we do not advertise on the portals, visit our website [bytysmichov.com](http://bytysmichov.com) The apartment is located on the 2nd floor of a new building from 2009 in Švejcárovo náměstí in Prague 5. The apartment consists of a living room with kitchenette, bedroom, balcony, bathroom with tub , and entrance hall. Quality floors and wooden euro-windows are a matter of course. The apartment has a security door with seven active locking points. The inner doors are equipped with frames. The apartment has a security system installed with a connection to the centralized protection and videophone. Heating with floor convectors. The bathroom is equipped with a hanging toilet, quality tiles and Italian design from La Futura. The bathroom has, among other things, a heating ladder. The apartment is fully furnished, including modern equipment, and is ready for immediate removal. Miele appliances are installed in the kitchen, each room is equipped with air conditioning. The apartment also includes a garage. The residence is located in the immediate vicinity of the protected nature zone Prokopské and Dalejské údolí. The Lužiny B metro station is less than 800 meters away. The journey to the center of Prague takes about 20 minutes. There are several kindergartens and primary schools, shops and medical facilities in the vicinity. For sports activities in the area there are several sports facilities, a swimming pool and an ice rink. Nearby are, among others, shopping centers AVION Shopping Park, Metropole Zličín and Galerie Butovice with shops, services, restaurants and a multiplex cinema, and they are also an indisputable advantage. You can enjoy rest and relaxation in the nearby Central Park with ponds, a children's playground and mini golf. For more information about the property or to arrange a tour, please contact our broker or fill out the form below, we will be happy to help you! We have a wide portfolio of non-public offers in new buildings in Smíchov. For more offers that we do not advertise on the portals, visit our website [bytysmichov.com](http://bytysmichov.com)

ID	<a href="#">29887</a>	Offer	Sale
Group	2+kk	Furnished	Furnished
Location	Švejcárovo nám. 2660/3, 155 00 Praha 13-Stodůlky, Česko	Ownership	Personal
Usable area	57 m <sup>2</sup>	Parking	Yes
City	<a href="#">Prague</a>	District	<a href="#">Praha 5</a>
City district	<a href="#">Stodůlky</a>	Status	Realized