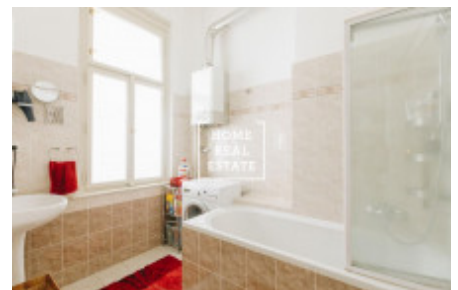
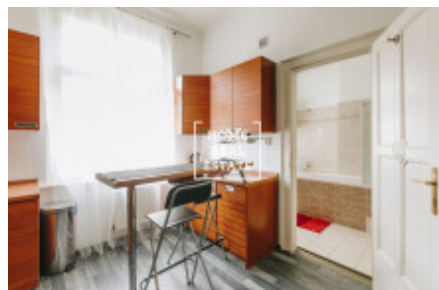
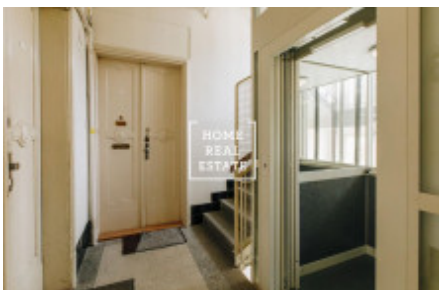


HOME  
REAL  
ESTATE

## Rent flat 2+kk, 52 m2 - Růžová, Praha 1



The company "Home Real Estate" offers for rent a luxury apartment 2 + kk with a size of 52 m2 in the historical part of Prague 1 - New Town. Stylish and fully furnished apartment is located on the 6th floor of a brick house after reconstruction. The apartment consists of a living room with kitchenette, bedroom, bathroom, separate toilet and hallway. The apartment is freshly renovated. Quality floors and tiles throughout the apartment are a matter of course, and new quality windows are also installed. The kitchen is equipped with all necessary appliances (fridge freezer, ceramic hob, oven, dishwasher and hood) and a bar table with chairs. The bedroom is equipped with a large double bed with two tables, a built-in wardrobe and a desk, in the living room there is a couch and a TV. The hall is equipped with a wardrobe and chest of drawers. The bathroom has a bath and sink, there is a washing machine. Building with elevator. The apartment has internet and mobile air conditioning. The apartment is located in the heart of Prague, so you will find all civic amenities and everything you need for life. Prague 1 offers a wide selection of the best restaurants, cafes, shops, museums, theaters and much more in the city. Perfect transport accessibility: in a few minutes walk you can reach the metro stations of all three lines. In the immediate vicinity there are metro stations Hlavní Nádraží and Můstek, tram stops Hlavní Nádraží, Jindřišská and Václavské náměstí. It is not possible to rent for the purpose of another short-term rental (Airbnb) !!! Total price: 23.000, - CZK + 2.000, - utilities Electricity and gas are transferred to the tenant For more information about the property or to arrange a tour, please contact our broker or fill out the form below, we will be happy to help you! Home Real Estate has had more than 650 satisfied customers since 2014.

ID	<a href="#">29858</a>	Offer	Rental
Group	2+kk	Furnished	Furnished
Location	Růžová 8, Nové Město, Česko	Ownership	Personal
Usable area	52 m <sup>2</sup>	Parking	Yes
City	<a href="#">Prague</a>	District	<a href="#">Praha 1</a>
City district	<a href="#">Nové Město</a>	Status	Realized