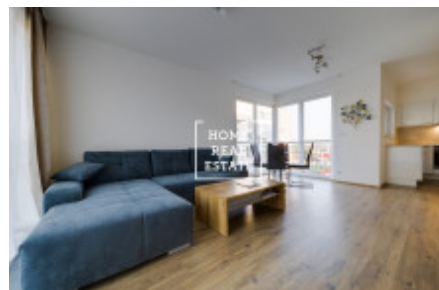
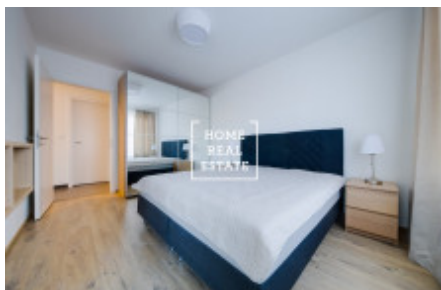


HOME  
REAL  
ESTATE

## Rent flat 3+kk, 80 m2 - Toufarova



The company «Home Real Estate» in the exclusive representation of the owner offers for rent a 3 + kk apartment of 80 m<sup>2</sup> in the residential project Jižní Výhledy from Central Group, located in the city district of Prague 5 - Stodůlky. The new and fully furnished apartment is located in a new building in Jeremiášova Street. The apartment consists of a living room with kitchenette equipped with all necessary appliances, 2 bedrooms, bathroom with toilet, pantry and hallway. The apartment also has a balcony (6 m<sup>2</sup>) and a cellar. Parking is possible in the garage of the house. Modern living in the countryside on the outskirts of Prague, but also only 15 minutes by subway from the vibrant center of the metropolis. The green natural roofs of the individual villas will take care of thermal comfort and, together with the new spacious park, ensure a healthy environment and peace. The quality of living in modern villas is enhanced by spacious balconies or attractive roof terraces for perfect relaxation. Of the sunny low-rise townhouses, it is just a short walk into the countryside around Dalejský potok or Prokopské údolí. Perfect civic amenities are provided by several kindergartens and primary schools, which can be easily reached on foot. There will be three playgrounds for children and a brand new sports ground. In the same way, there is an inexhaustible number of shops not only for everyday shopping. Transport accessibility: Metro station B Stodůlky or Luka is a few minutes walk from the house. You can reach the center of Prague by car in just 15 minutes. To move in immediately. Total price: 22,000 CZK + 4,200 CZK utilities + 1,500 CZK electricity Price includes parking in the garage and cellar In this project we have 5 apartments with a similar layout. For more information, contact the broker or fill out the form below.

ID	<a href="#">29844</a>	Offer	Rental
Group	3+kk	Furnished	Furnished
Location	Toufarova 1, Praha 13, Česko	Ownership	Personal
Usable area	80 m <sup>2</sup>	City	<a href="#">Prague</a>
Status	Realized		