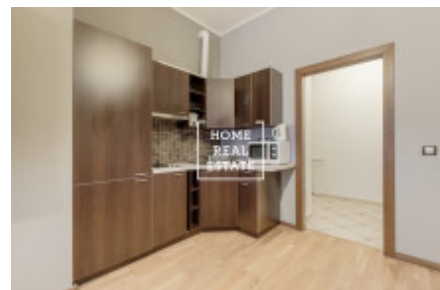
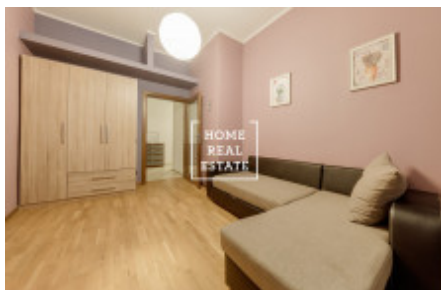
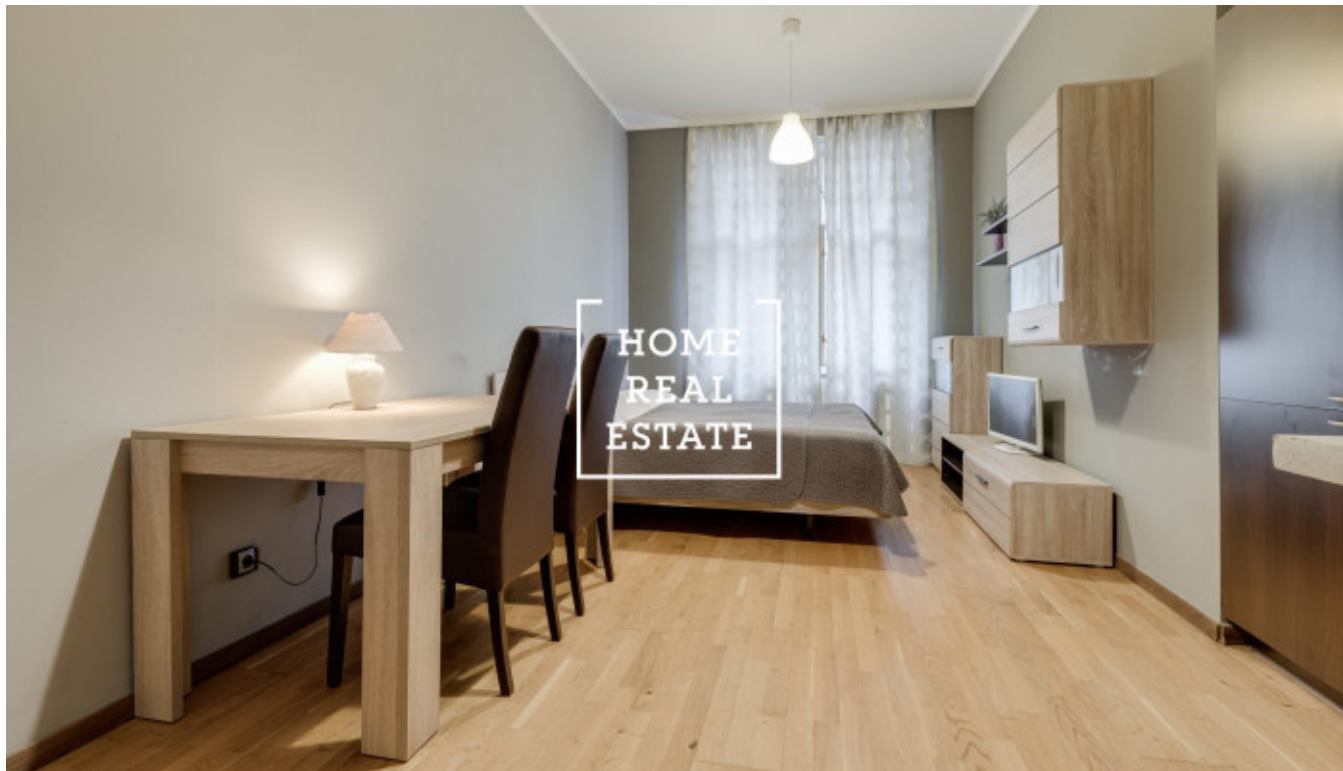


HOME  
REAL  
ESTATE

## Rent flat 2+kk, 58 m2 - Na Bělidle, Praha 5



The company "Home Real Estate" offers for rent an apartment 2 + kk with a size of 58 m<sup>2</sup>, situated in a desired location in Prague 5 - Smíchov. The fully furnished apartment is located on the 2nd floor of an apartment building with an elevator and is oriented to a quiet courtyard. The layout of the apartment consists of a living room with kitchen equipped with all necessary appliances, bedroom with double bed, bathroom with toilet and hallway. In the vicinity you will find all civic amenities: shops, services, restaurants, bars, post office, OC Nový Smíchov, multiplex CineStar and within walking distance school and grammar school. Nearby is the Sacre Coeur Park, Palacky Bridge and Smichov Embankment. Excellent access to international schools (ISP, Riverside School, Park Lane International School, French Lyceum, Prague British School) and Václav Havel Airport. Good transport accessibility: two minutes walk from the house are tram stops eight day and four night lines and metro station line B Andel. The place is also well connected to the city ring. To move in from 17.09.2019 Rent: 18,000 CZK + 4,000 CZK utilities (without internet) Refundable deposit of 22,000 CZK I recommend a tour today For more information and the possibility of a tour, contact the broker or fill out the form below.

ID	<a href="#">29766</a>	Offer	Rental
Group	2+kk	Furnished	Furnished
Location	Na Bělidle 27, Praha 5-Smíchov, Česko	Ownership	Personal
Usable area	58 m <sup>2</sup>	City	<a href="#">Prague</a>
District	<a href="#">Praha 5</a>	City district	<a href="#">Smíchov</a>
Status	Realized		