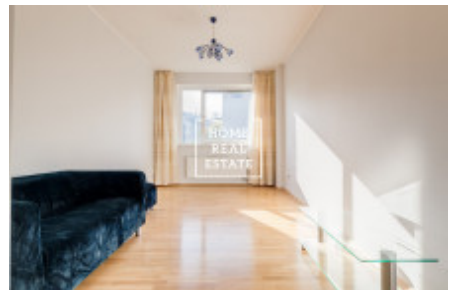
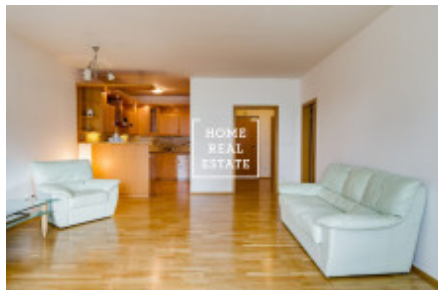
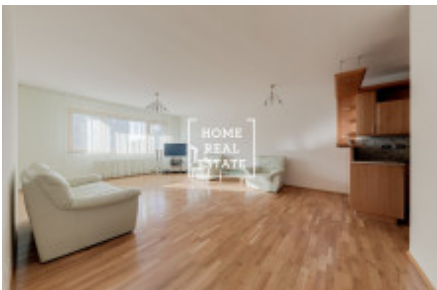


HOME  
REAL  
ESTATE

## Sale flat 2+kk, 81 m<sup>2</sup> - Tibetská, Praha 6



The company «Home Real Estate» in the exclusive representation of the owner would like to offer for sale a 2 + kk apartment with a size of 80.8 m<sup>2</sup>, located in the Terasy Červený Vrch II residence in the desired city district of Prague 6 - Vokovice. Fully furnished apartment facing west is located on the 1st floor of a new building from 2004 from the construction company Skanska Group. The apartment consists of a spacious living room (35.2 m<sup>2</sup>) with kitchenette (7.6 m<sup>2</sup>), bedroom (15.7 m<sup>2</sup>) with wardrobe (5.2 m<sup>2</sup>), hallway (6.7 m<sup>2</sup>), pantry (5 m<sup>2</sup>) ) and bathroom with toilet (5.4 m<sup>2</sup>). The kitchenette with marble kitchen worktops is equipped with all necessary electrical appliances (glass-ceramic stove, oven, refrigerator, hood, microwave, dishwasher). The bedroom is equipped with a double bed and a smaller built-in wardrobe. The bathroom has a bathtub, sink, washing machine. The residences have underground garages, a reception and a lift. The apartment includes a cellar and a parking space in the garage. Comfortable living in the place of the project Terasy Červený vrch, provides everything that the city has to offer, and at the same time is set in the bosom of nature, is not easy to find. All these advantages are fulfilled by the project Terasy Červený vrch in the vicinity of the Divoká and Tichá Šárka nature reserves with the Džbán swimming pool, which are ideal for sports and walks. On the south side, the new complex is connected to the older development of prefabricated houses at Evropská třída, on the opposite side of which it is possible to use the services of the Delvita supermarket and the post office. Evropská třída is also a fast connection to Dejvice's Victory Square with a concentration of shops, banks, cultural facilities, all services as well as schools. Excellent transport accessibility: to the metro station Bořislavka 10 minutes on foot, tram stop Červený Vrch is located in 3 minutes walk, to get directly to the city center takes less than 20 minutes. Excellent transport links to Václav Havel Airport. Total price: 6.750.000, - CZK including agency commission Housing costs are 4220, - CZK + 800, - CZK electricity + 730, - CZK garage Apartment floor plan, important lines with information about the location and information about fees we will be happy to send to your email address. Are you interested in a tour of the apartment? Just fill out the form below, we will call you as soon as possible and arrange an inspection date that will suit you.

ID	<a href="#">29761</a>	Offer	Sale
Group	2+kk	Furnished	Furnished
Location	Tibetská 806/2, Praha 6-Vokovice, Česko	Ownership	Personal
Usable area	81 m <sup>2</sup>	Parking	Yes
City	<a href="#">Prague</a>	District	<a href="#">Praha 6</a>
City district	<a href="#">Vokovice</a>	Status	Realized