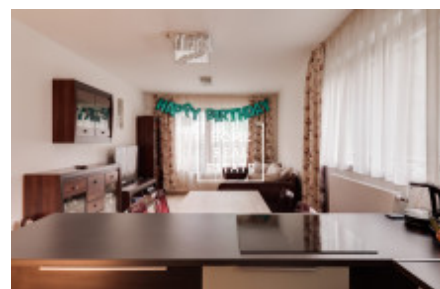


HOME  
REAL  
ESTATE

## Sale flat 4+kk, 88 m2 - Mozartova, Praha 5



«Home Real Estate» offers for sale a residential unit 4 + kk, 88 m<sup>2</sup> with a terrace of 32 m<sup>2</sup>, located in the residential project Na Bertramce in a sought-after location in Prague's Smíchov, Prague 5. Partly furnished apartment is located on the 1st floor of a modern five-storey house with parking. The interior of the apartment consists of a living room with a dining room with a fully equipped quality kitchen, a master bedroom with access to the terrace, two more bedrooms also with access to the terrace and a separate bathroom. The apartment also has a large entrance hall with wardrobes and a separate toilet. A quiet street surrounded by greenery is basically in the city center approx. 7-10 minutes walk to the metro station Anděl and the five-star shopping center Nový Smíchov with a wide range of shopping and sports in the Form Factory Premium Fitness Anděl, in a pleasant private studio BodyBody with a unique fitness concept or more. There are plenty of places in the area for the development of children (clubs, kindergartens, schools, several playgrounds) and for the rest of adults (restaurants, cafes, cinemas, sports clubs).

Garage and cellar in the basement are included.

The Na Bertramce project has only 41 flats, was completed in June 2018 and is located opposite the legendary Bertramka homestead, where Wolfgang Amadeus Mozart also lived. Heating throughout the house is central. The apartments are equipped with window blinds and recuperation, which ensures a constant supply of fresh air and thus a healthy environment. According to the table of energy label categories, the project falls into category B - very economical.

Are you interested in a tour of the apartment? Just fill out the form below, we will call you as soon as possible and arrange an inspection date that will suit you.

ID	<a href="#">29734</a>	Offer	Sale
Group	4+kk	Furnished	Furnished
Location	Mozartova 844/14, 150 00 Praha 5- Smíchov, Чехия	Ownership	Personal
Usable area	88 m <sup>2</sup>	Parking	Yes
City	<a href="#">Prague</a>	District	<a href="#">Praha 5</a>
City district	<a href="#">Smíchov</a>	Status	Realized