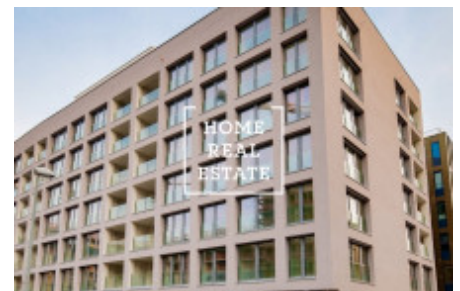
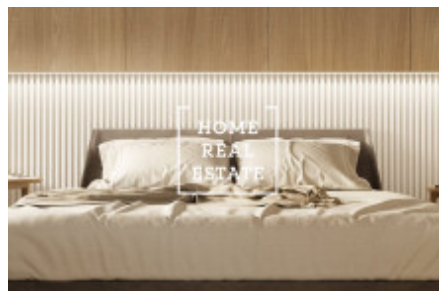
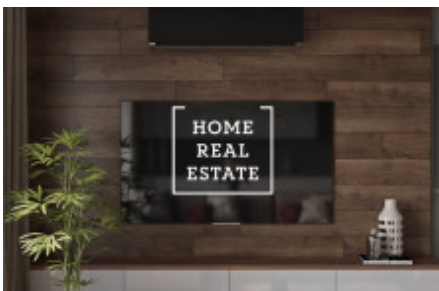


HOME  
REAL  
ESTATE

## Sale flat 2+kk, 57 m2 - Za Karlínským přístavem, Praha 8



The company "Home Real Estate" would like to offer for sale a 2 + kk apartment within a new residential complex which will be completed in the first half of 2020 with an area of 57 m<sup>2</sup>. The living space of the apartment is 57 m<sup>2</sup>, which consists of a bedroom (16.5 m<sup>2</sup>), living room with kitchenette (23 m<sup>2</sup>), toilet (1.4 m<sup>2</sup>) and bathroom (6.4 m<sup>2</sup>), and a cozy chamber ( 4.5 m<sup>2</sup>), where a washing machine can be placed very well or a wardrobe can be created, and finally there is a hall (5.7 m<sup>2</sup>) in the apartment. Among all the big bonus of the apartment is the balcony (5.4 m<sup>2</sup>). Apartment complex located in the very center of the capital in Prague 8. This area connecting Libeň with the New Town, which combines the center of the capital of Prague with the beautiful nature of Rohan Island has something to offer. Of course, in the neighborhood you will find stylish cafes, various shops, restaurants and pubs, as well as playgrounds and schools. Apartment complex absolutely new and unique in Prague. Mainly because the roof level also has a common terrace accessible to all residents of the house. Your slow morning enlivened by the tinkling of a tram, your fresh croissants in the bistro around the corner, your lunch break equal to a gourmet experience in a local restaurant. Parking spaces can be purchased at an additional cost. The modern appearance of the district is to some extent influenced by the Vltava River, which, with the destructive power of the millennial water, entered the streets of Karlín in the spring of 2002 and definitely changed the appearance of the place. The drama will not be repeated, as Prague has invested in building flood protection measures. On the Rohanské nábřeží, one feels like one is in a different, western city. Danube House, Nile House, Amazon Court, River Diamond. These are the names of new office buildings located in the fastest growing district of Prague on the banks of the Vltava. Which is also a benefit for investors, after all, managers from abroad of those companies have to find something close to rentals. Karlín is also interesting for residents with very good transport accessibility, there are both a bus stop "Urxova" and a tram stop "Křižíkova". The metro station "Křižíkova" (B) (only 3 stops to Wenceslas Square) is located in a 3-minute distance. The photos are visualizations of the apartment. Excellent investment opportunity. We will be happy to send the floor plan of the apartment, important lines with information about the location and information about the fee to your email address. For more information about the property or to arrange a tour of the house, contact us, we will be happy to help you.

ID	<a href="#">29714</a>	Offer	Sale
Group	2+kk	Location	Za Karlínským přístavem 4/683 Karlín Praha
Ownership	Personal	Usable area	57 m <sup>2</sup>
City	<a href="#">Prague</a>	District	<a href="#">Praha 8</a>
City district	<a href="#">Karlín</a>	Status	Realized