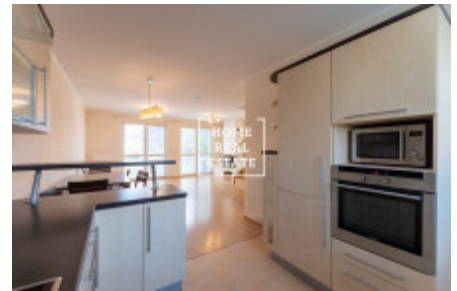
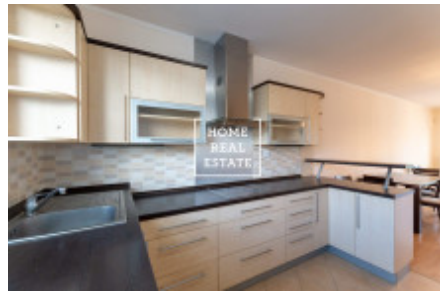


HOME
REAL
ESTATE

Sale house monument / other, 144 m2 - Smržová, Praha 10



The company «Home Real Estate» in the exclusive representation of the owner dares to offer for sale a part of a detached family semi-detached house with a layout of 5 + kk with a total area of 144 m² and land (435 m²), located in a very desirable and quiet location Prague 10 - Pitkovice . A partially furnished two-storey house in Pitkovice is ideal housing for a large family. On the ground floor there is a spacious living room with kitchen, utility room with boiler and bathroom. Upstairs are 4 spacious bedrooms and another bathroom. The rooms have access to the balcony and terrace. The house was approved in 2007, the developer is the company Central Group. Directly in the place is the newest kindergarten with a capacity of 112 children and rich civic amenities, including schools and a wide range of services is in neighboring Průhonice and Uhřetěves. The Pitkovice district on the south-eastern edge of the capital city of Prague, close to the Botič - Milíčov Nature Park and the Průhonice Castle Park, which is one of the most important castle parks in the Czech Republic. The park and its plant collections were inscribed on the UNESCO World Heritage List in 2012. In neighboring Čestlice you will find several large multinational retail chains (Makro, Kika, Albert, Bauhaus), the Spektrum shopping center and, for example, car showrooms. Since 2008, there is the largest aqua park in Central Europe, Aquapalace Prague.

- 17 minutes by car to Wenceslas Square (17 km)
- 3 minutes walk to the bus stops - lines 213 and 906.
- 10 minutes by bus to the metro station C - Haje.
- 3 minutes by car to Uhřetěves, Průhonice

Total price: 13.598.000, - CZK including agency commission We will be happy to send the floor plan of the house, important lines with information about the location and information about fees to your email address. Are you interested in a tour of the house? Just fill out the form below, and we will contact you as soon as possible and arrange a date of inspection of the house that will suit you.

ID	29524	Offer	Sale
Group	Monument / Other	Furnished	Furnished
Location	Smržová 106/13, Praha 22, Česko	Ownership	Personal
Usable area	144 m ²	City	Prague
District	Praha 10	City district	Pitkovice
Status	Realized		