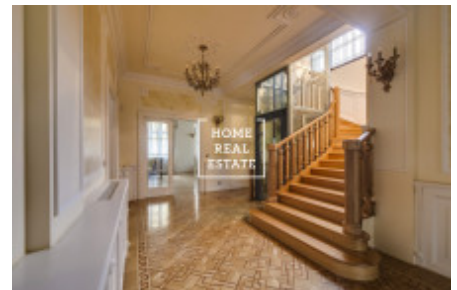
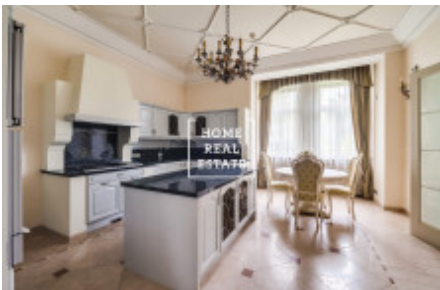


HOME  
REAL  
ESTATE

## Sale house monument / other, 900 m2



«Home Real Estate» exclusively offers for sale a luxury villa 12 + 1 with an area of 900 m<sup>2</sup>, located in the diplomatic district of Bubeneč Prague 6 - Bubeneč. Immediately after its establishment in this part of the city, extensive housing construction began with the participation of leading Czech architects. At the beginning of the twentieth century, a remarkable residential colony was established around Na Zátorce Street, and the villas of architects J. Koul, Suchard, Mašek and many others were exhibited. The location is located near the center of Prague. Thanks to its great availability, it is popular and very popular even today. Embassies and two international schools (British International School, OP, Park Lane International School, Inc., Riverside, op) nearby increase the prestige of this place. Easy access to Václav Havel Airport, which can be reached within 15 minutes, is also an undoubted advantage. In the vicinity you can find all civic amenities, cultural activities and the possibility of a pleasant rest in nature, which is provided by the parks Královská obora and Stromovka. This beautiful villa was built in 1924 and underwent a complete and expensive renovation in 2010 and currently offers luxury living in the true sense. It is a historic fairy with three floors and a cellar. The living area consists of 7 bedrooms, 4 bathrooms, a large living room with a fireplace, a library and an equipped kitchen with a dining area. The interior of the villa is fully equipped with luxurious wooden Italian and Spanish furniture. The feeling of truly luxurious living is further enhanced by ornamental parquet floors and quality wooden windows. The background of the villa represents a wide range of uses such as indoor pool, saunas, steam baths and jacuzzis. The comfort of living will certainly increase the possibility of accommodation for safety services, elevator and last but not least 2 garage spaces and in addition parking on the plot. The picturesque garden with ornamental trees attracts relaxation and pleasant rest. Excellent transport accessibility to the outer and inner city ring Roads and nature reserves for leisure are nearby. All services within reach (kindergarten, primary school, playground, post office, restaurant). Excellent accessibility to cultural institutions: The military library, galleries, cultural monuments and several temples and churches are in the vicinity of the fairy. Villa equipment: luxury Italian and Spanish furniture, equipped kitchen, quality parquet floors, wooden windows. Price: on request For more information and the possibility of a tour, contact the broker or fill out the form below.

|               |                         |             |                         |
|---------------|-------------------------|-------------|-------------------------|
| ID            | <a href="#">29520</a>   | Offer       | Sale                    |
| Group         | Monument / Other        | Location    | <a href="#">Praha 6</a> |
| Ownership     | Personal                | Usable area | 900 m <sup>2</sup>      |
| City          | <a href="#">Prague</a>  | District    | <a href="#">Praha 6</a> |
| City district | <a href="#">Bubeneč</a> | Status      | Realized                |